



MIDWEST

LIVESTOCK



Menomonie, WI

715.235.5144

Renner, SD

605.274.3656

Zumbrota, MN

507.732.4673

dairysales@midwestlivestock.com

www.midwestlivestock.com

OUR GUARANTEE

PROFESSIONALLY INSTALLED. PROFESSIONALLY SERVICED.

CUSTOMER SERVICE

We provide personal service beyond the sale. We will do what we say and deliver on time. Our product specialists will listen to your needs and offer a solution—even if you don't know the product description or part number.

- Sales representatives with real knowledge of our products.
- Installation professionals recognized as experts in their field.
- Service and repair technicians who can help install your equipment and keep it operating smoothly.

REMODELING

Don't wait to update, retrofit, expand, or convert an existing structure. Our remodeling specialists will ensure that your project exceeds your expectations. No matter if it is a small or big project, we are creative problem solvers who have:

- Solutions for increased efficiency and productivity.
- Expertise to incorporate technological advances.
- Design assistance to make the most of current facilities.

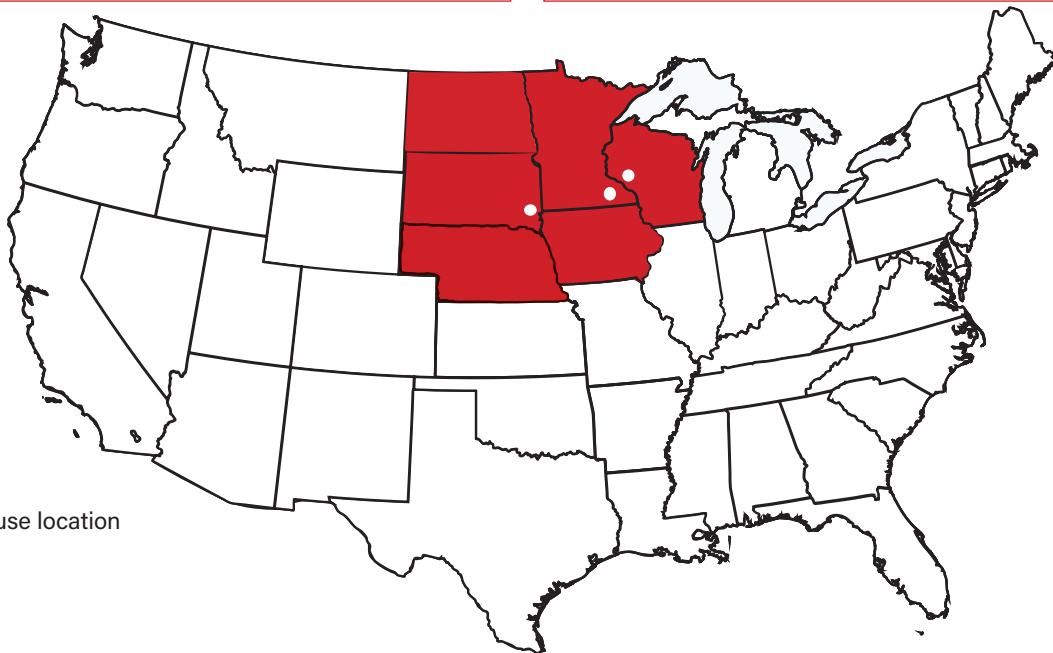
EQUIPMENT

Our equipment specialists will help you determine the best setup for your operation. We offer an extensive product offering with the highest quality items for your operation.

- Three warehouses with thousands of items in stock and shipped daily.

NEW INSTALLATION

Details matter. With highly trained technicians we can make your vision a reality. We will bring our know-how and work ethic to finish the job to your satisfaction.



o = MLS Warehouse location

**We are proud to serve dairy producers in the upper Midwest:
Wisconsin, Minnesota, Iowa, South Dakota, North Dakota and Nebraska**



Dairy Sales and Service Teams

We're committed to delivering unmatched service. When you trust us with a project, we will do it right and finish the job to your satisfaction. You can count on us to provide high quality products and bring our experience to serve your farm's needs.

GENERAL MANAGER

PAM HENDEL
phendel@midwestlivestock.com
507.450.1569

SALES MANAGER

JIM FELLING
jfelling@midwestlivestock.com
507.272.1478

MINNESOTA

TONY DEUTMEYER
tdeutmeyer@midwestlivestock.com
507.732.4673

WISCONSIN

DARREN PIEPER
dpieper@midwestlivestock.com
715.235.5144

SOUTH DAKOTA

TRACY SITES
tsites@midwestlivestock.com
605.274.3656

SALES

KEVIN KAUTZ
kkautz@midwestlivestock.com
507.421.1151

SALES

CRAIG KROGSTAD
ckrogstad@midwestlivestock.com
605.254.7028



The MLS Dairy Team is dedicated to providing industry leading sales, service, equipment and supplies for your dairy operation.

We continuously reinvest in the latest authorized training, diagnostic equipment, and tools to provide our customers with optimized equipment, energy efficiency, ultimate production, animal health and cow longevity.





SERVICES

Our goal is to provide the finest solutions and continuously improve our processes in dairy facility planning, installations, herd software management, preventative maintenance and 24/365 emergency service.

Dairy Equipment

- Parlors & pipelines
- Milk cooling & storage
- Energy recovery systems
- Water treatment & purification
- Pasteurizing systems
- Activity & herd management software
- Cow traffic & auto sorting
- Floor & wall coatings & wall liner
- Sand Recovery Systems

Planning and Preventative Maintenance

- Milking stall/parlor performance
- System analysis
- Scheduled maintenance
- Facility planning
- Liner exchange
- Dairy supplies
- Hoof treatment & fly systems
- General contracting

Barn Equipment

- Custom gates & panels
- Stalls & headlocks
- Livestock waterers
- Rotating cow brushes
- Matting & mattresses
- Ventilation & heating systems
- Bale feeders & hay saver inserts
- Sidewall & parlor curtains
- Lighting
- Calf stalls & automated calf feeding
- Manure scrapers & agitation systems

Route Service:

At Midwest Livestock Systems we offer very competitive pricing, but we also believe our dairy route hygiene specialists and service technicians play an important role in your dairy's success. We monitor crucial components that reduce or eliminate elevated PI bacteria and SCC counts. We also inspect equipment and recommend preventative maintenance measures that increase the longevity of your investment.

Please contact us for any of your dairy product needs at:

715.235.5144 : Menomonie, WI

507.732.4673 : Zumbrota, MN

605.274.3656 : Renner, SD

www.midwestlivestock.com

E-mail us at dairysales@midwestlivestock.com

PROFESSIONALLY INSTALLED. PROFESSIONALLY SERVICED.

PROJECT HIGHLIGHT: HEIFER BARN

Ryzebol Dairy - Mantorville, MN

400' heifer barn with Freudenthal headlocks, gates, slant bars, 360' curtains and fans.



Visit us anytime at our dairy warehouse locations.



Zumbrota, MN



Menomonie, WI

New warehouse coming soon in Renner, SD.

DAIRY PRODUCTS

MILKING & PARLOR

FutureCow Teat Scrubber	11
GEA CowCleaner Duo Cow Brush	11
GEA Classic 300E Milking Claws	13
GEA Dematron Control Unit	13
GEA DeMax	13
GEA Milk Cooling Tanks	13
GEA Koolway Plate Coolers	14
GEA Koolway Chillers	14
GEA XeTherm Heat Exchanger	14
CowScout™ Activity Monitoring System	14
Mueller Milk Cooling Tanks	16
Mueller Fre-Heater	17
Mueller HiPerForm Plus Control	17
Mueller Digital E-Star EVC Condensing Unit	17
Mueller Chiller	17
Mueller Accu-Therm Plate Coolers	17
SCR Heatime Pro System	19
SenseHub Dairy Monitoring System	19
FreeFlow Measuring System	19
Allflex Smart Pulsation	19
Beco Pulsation Monitoring System	20
H-Factor Milking Claw	20
IMMIX G2, "Elimating the Unknown"	20
Beco Scannexus Electronic Milk Meter	20
Beco Group Pulsation Controller	20
G2 FlowNexus	20
Continental Commercial Washing Machines	22
FS Curtis Air Compressors	22
CastAir Compressors	22
Under Udder Lighting	22
Eiko Lighting	22
Wash-Down Booster Pump	23
Signature 2000 Booster Pump Replacement Parts	23
Sutobilt Vacuum Pump Packages	23
E-Zee RBS Vacuum Pump	23

BARN EQUIPMENT

VES Positive Pressure Fan	24
ECVAir	24
VES AFR	24
VES Circulating Fans	25
VES High Pressure Fogging System	25
EasyFix Freestall Cubicles	26
EasyFix Jupiter F	26
EasyFix MG Motion	26
EasyFix Soft Floor	26
EasyFix Neptune	26
J&D Galvanized Panel Fans	27
50", 55" & 60 Panel Fans	27
Mega Torque	27
A.O. Smith Water Heaters	28
Sand Recovery Systems	29
Bedding Master	29
Greenline E-series Pumps	29
Dura-Chain Scrapper	30
Valmetal Pit Pump/Agitator	30
Liqui-Trans Piston Transfer Pump	30
Manure Separator System	31
Valmetal Feed Pusher	31
Norbco, Freudenthal, EasyFix and J&D Dairy Panels, Headlocks, Gates Free Stalls & Fencing	31
AgriComfort Foam Mattress Systems	32
Agromatic Rubber Flooring	32
Con-Korite Xtra Mortar	32
Edstrom Cool Sense™ Motion Cooling System	33
FutureCow Comfort Brush	33

BARN EQUIPMENT (Continued)

Hired-Hand® Rollseal Doors	
Model RS-400 Dairy Door	34
Model RS-300 Dairy Door	34
AutoVent Curtain System	34
Dairy Curtains	
13-oz Vinyl Curtain	34
18-oz Vinyl Curtain White	34
10-oz Frosty Clear Vinyl Curtain	34
Thorp Equipment Stainless Steel Door	35
DCC Waterbeds ISO	35
Ritchie Drinkers & Parts	35
Mirafount Waterer	35

CALF CARE

GEA Automatic Calf Feeder	36
AgriPlastic Indoor Calf Housing	36
Ultra Flex-Pen	36
Calf Star 'Milk Jug' Milk Cooling Tanks	37
Calf Star Milk Taxi 4.0	37
Calf-Tel Calf Pen	38
Calf Milk Pasteurizers	38
Bottle Washers	38
PolyDome Calf Housing	38

SUPPLIES

Agrochem Hoof Care	39
Virkon Disinfectant	39
GEA Products	
Teat Dips	40
Liners	40
General Cleaning	40
Detergents, Acid, Sanitizer, Acid Sanitizer	40
Kattleguard™ Automatic Fly Control Systems	42
Towels	
Sani-Sure Cloth Dairy Towels	42
Microfiber Towels	42
FIL Tail Paint	42
Dairy Fly Spray	
Dy-Fly-1 RTU	43
ProZap VIP RTU	43
ClassicPro GQ Silicone Liner	43
Silicone Air Tubes, Milk Hose, Vaccum Tubing	43
Milking Gloves	43
Milk Filters	43
Hydrite Chemical Co. Hydrogen Peroxide	43
First Choice Calcium Bolus	43
Udder Relief Gold	44
Valiant Products	44
ECOLAB® Products	
Detergents	44
Acids	44
Sanitizers	44
Teat Dips	44

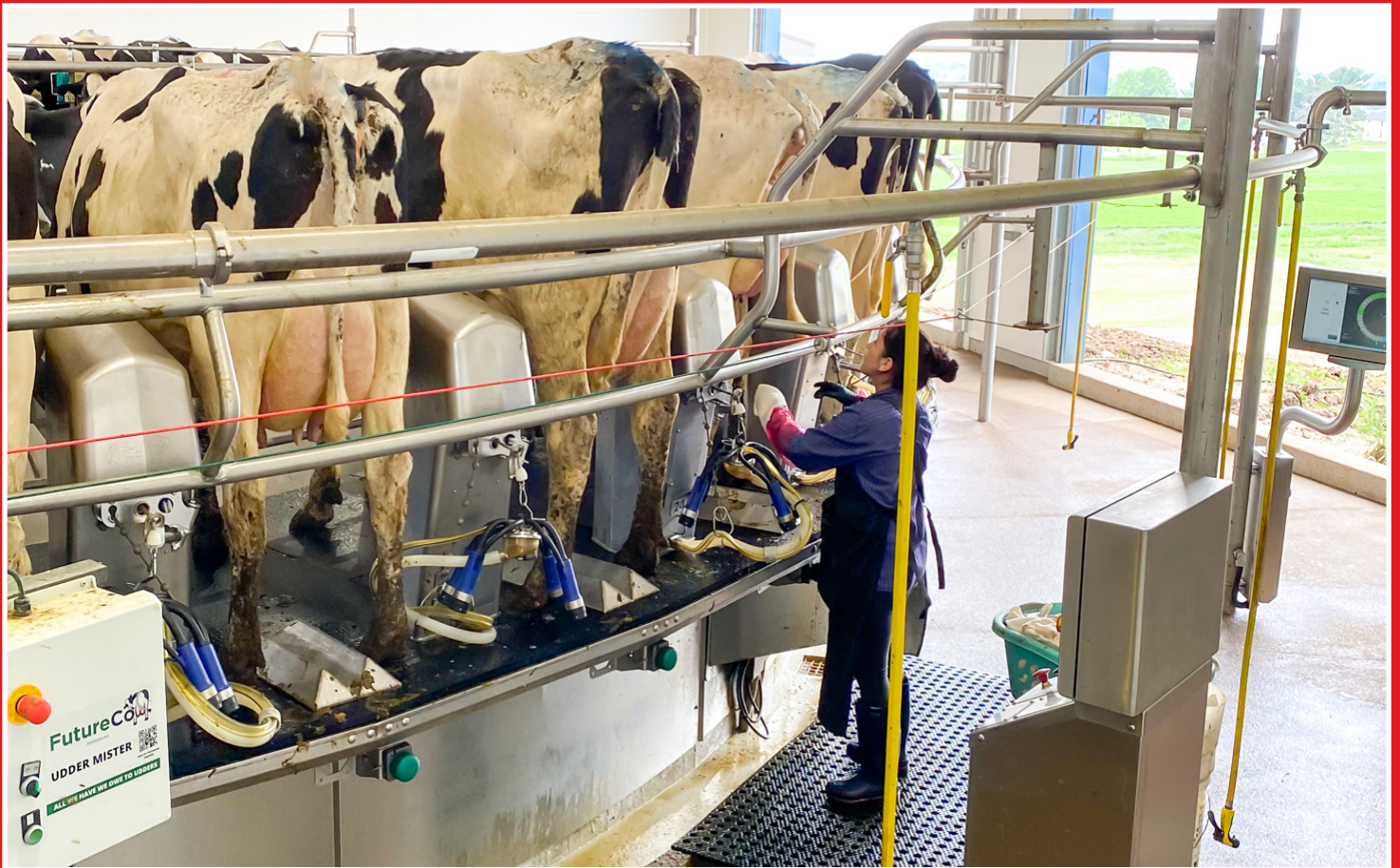
MISCELLANEOUS

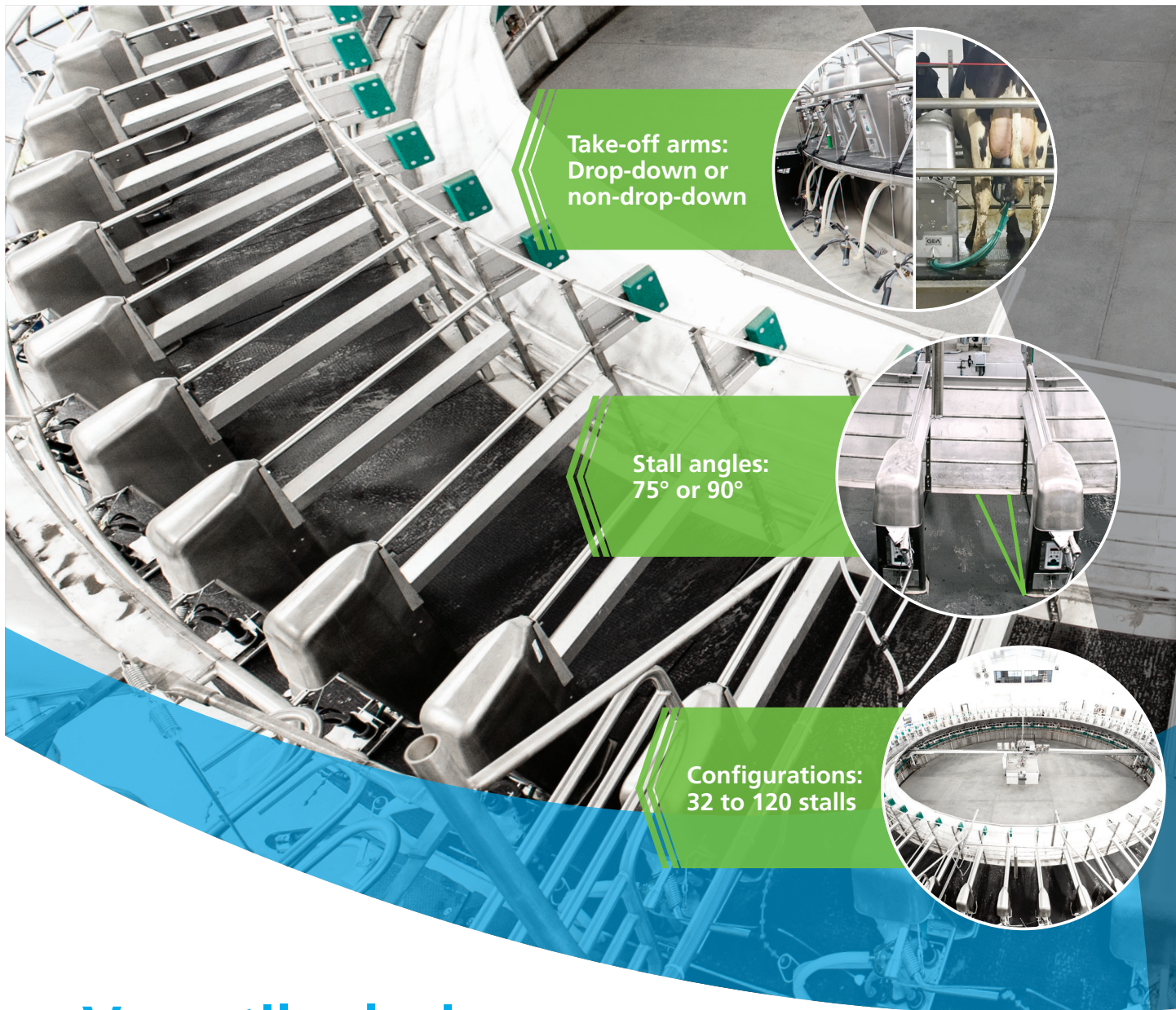
Biosecure Cow Cremator	45
----------------------------------	----

**GEA product features are on page 11-15.
See us for all your GEA equipment and parts.**

PARLOR PROJECT HIGHLIGHT

Installed T8800 GEA 40 stall rotary • Single operator with robotic pre-and post dippers.
Bomaz Farms • Hammond, WI





Take-off arms:
Drop-down or
non-drop-down

Stall angles:
75° or 90°

Configurations:
32 to 120 stalls

Versatile design to fit your farm

GEA's DairyRotor T8000 Series offers more options to maximize throughput and your investment

GEA has taken rotary parlor innovation to a new level with the heavy-duty DairyRotor T8000 series. The new low-profile cabinet design — engineered for fast, smooth cow flow on and off the platform — can be paired with two different undercarriage options. Let our team help turn your rotary parlor vision into reality with the DairyRotor T8000.



gea.com

FutureCow® — Automated teat prep system

One person can prep

270 in **45**
COWS **MIN.**

CONSISTENCY ▲

LABOR ▼

LEAH KIELER

Kieler Farms, Wisconsin
Milking 1,800 cows
50-stall GEA rotary parlor
& FutureCow® Prep System

**GEA AUTOMATES MY DAIRY
INTO THE FUTURE**

"The most impressive part of the FutureCow Prep System is knowing my employees are prepping cows consistently. Cows need consistency and that's what FutureCow brings to our parlor. I would recommend the FutureCow system if you are looking to remove variables in your parlor prep while maximizing efficiency."

GEA engineering for
a better world

gea.com

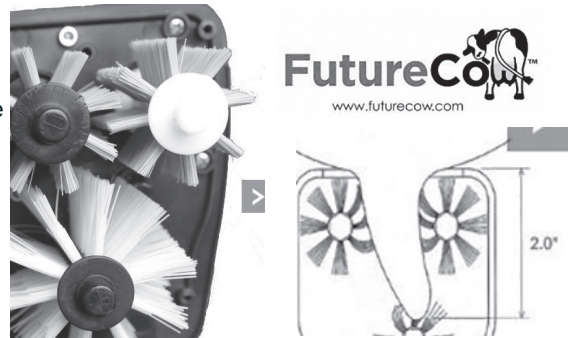
FUTURECOW® PREP SYSTEM

THE FUTURE OF EFFICIENT COW PREP IS HERE

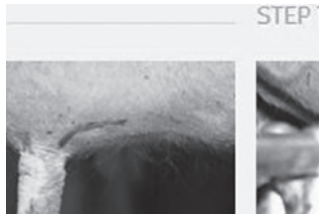
The patented FutureCow® Prep System provides an extremely reliable and cost-effective way to wash, disinfect, stimulate, and dry the cows' teats prior to milking. There are three definite benefits of the FutureCow system:

1. Consistent cleaning every use
2. Better milk quality can be achieved
3. Lower SCC and mastitis are typical result

Our goal is to help you strive for the best milk quality possible with the highest level of comfort for your animals, all while achieving the highest premiums available. Let FutureCow help you achieve even greater heights with your dairy.

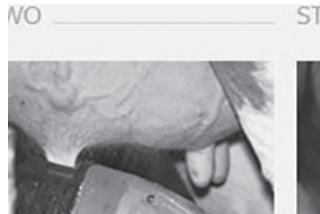


STEP 1



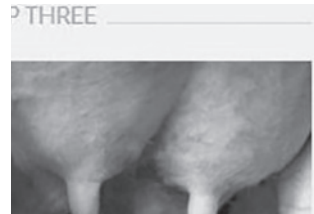
Only FutureCow provides a unique disinfectant that provides precise and instant removal of contaminants on the teat without leaving any residue.

STEP 2



The FutureCow Prep System creates a consistent cleaning process in one easy step to help achieve cleaner, healthier cows every time.

STEP 3



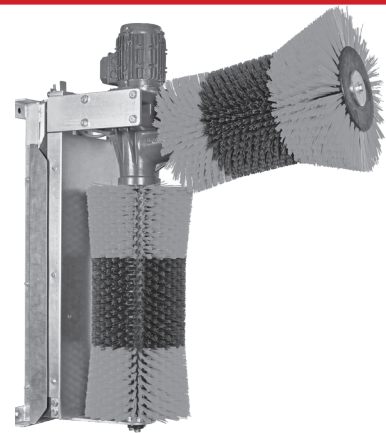
The FutureCow Teatscrubber will enhance milk quality and improve udder health, all while increasing the dairy's bottom line.

GEA COWCLEANER DUO COW BRUSH

The two brushes are shaped to ensure that a larger area of the cow (head, back, brisket and sides) is cleaned and brushed. The correct installation position is based on the average height of the cows within the herd and ensures optimal use, cow comfort, and cleanliness benefits.

Maximum capacity of each brush is 60 animals and it should be installed in a low traffic area. The CowCleaner Duo can be mounted to a wall or to a post.

- Two brushes, instead of one, for greater cow comfort and cleanliness benefits
- Direction of rotation is reversed each time the brush is started – resulting in even wear of the bristles
- Nylon (Polyamide) bristles that are resistant to wear and last longer
- Heavy-duty motor/gearbox unit with display
- One-year warranty





Time For An Upgrade?

Ask your local GEA dealer about milk meter and milking control upgrades today!

You can transform your parlor and have more information at your fingertips than ever before. Start making smarter herd management decisions and maximize the performance of your operators and your cows with sophisticated, but easy to use, milking controls, meters, and software from GEA.

GEA CLASSIC 300E MILKING CLAWS

The Classic 300E milking clusters make milking both gentler and more efficient. Their modular design means that they can be adapted flexibly and easily to changing conditions.

- Direct milk flow without unnecessary detours for gentle milk treatment.
- Can be expanded flexibly as part of a modular system
- Durable, food-safe materials that are built to last and are resistant to acids and impacts.
- Specialized cluster for narrower teat configurations.



GEA DeMax

DeMax 55 & DeMax 60

This selection of milking stall assistants will provide you with maximum milking comfort. DeMax 55 controls the automatic upgrade via StimoPuls and automatic switching off of the pulsation system. DeMax 60 also represents maximum cluster removal comfort (Back Flush, PosiCare, etc.).



GEA Dematron CONTROL UNIT



DemaTron 60 and the DemaTron 70 control units are absolutely the top products with regard to their price/performance ratio.

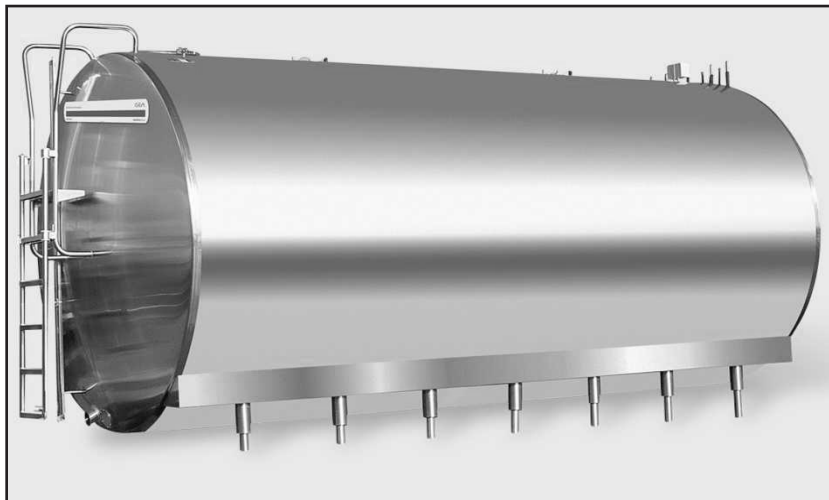
DemaTron 60 controls and monitors the milking process ranging from pulsation up to automatic cluster removal. The milk yield recorded by the special LactoFlow monitor is used as the basis for controlling an effective milk management process. DemaTron 70 will additionally provide you with precise information of the milk yield, together with the removal of the clusters.

The milk flow and milk yield monitoring information – provided by Matatron MB – can be used to optimize the removal function and udder health as well. The benefits for you are a safe monitoring of the milking process and optimum stripping. For manual animal identification in the parlor we offer DemaTron 75.

GEA MILK COOLING TANK

Superior quality assurance standards-the calibration meter and the proving tank are tested daily to be within .005% of each other to ensure accurate calibration; infrared testing ensures proper distribution of insulation both during and after the insulating process.

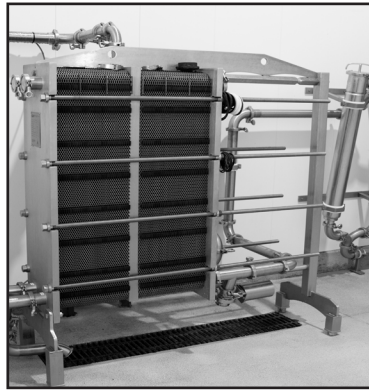
- Sturdy tank construction – inner tank made from 14-gauge stainless steel
- More cooling capacity – larger evaporator surface area promotes 25% higher cooling capability at the bottom of the milk tank where it is needed.
- Panels are 60" wide versus 48" for most other milk tanks.
- Patented ladder design
- Consistent temperatures
- Foam injection and infrared testing ensures outstanding insulation so temperatures will not rise more than 3° degrees after 24 hours without refrigeration



- 5-year limited warranty against refrigerant leaks
- 5-year limited warranty on calibration
- 1-year limited warranty on manufacturing defects

GEA KOOLWAY® PLATE KOOLERS

- Pre-cools milk with well water
- Can be wall or floor mounted
- Durable, easy cleaning design
- Expandable options to grow with your dairy



GEA KOOLWAY® CHILLERS

GEA offers a complete line of packaged and remote air-cooled chillers, water-cooled chillers and cabinet chiller systems. Each model is supplied standard with the proven Spiral Drum Heat Exchanger.

The **KoolWay® Packaged Air-Cooled Chiller** is a total packaged system for ease of installation and start up.

- Available with a single or dual 10, 20, 30, 40 and 50 horsepower compressor to provide the most efficient match to cooling load
- Available with semi-hermetic compressors for better efficiency and dependability
- Total packaged system for ease of installation and start up
- Pre-charged and pre-run at the factory; ready to perform
- Built in a controlled environment to eliminate defects caused by contaminations that can sometimes be found with field-installed piping
- Must be installed outdoors



GEA XeTherm HEAT EXCHANGER

State-of-the-art, efficient heat recovery system that was built to last and is well-suited for high production dairies, specifically chiller installations. The sensible, energy-saving design of the XeTherm, along with its quality engineered parts, will ensure a highly efficient reclaim of heat without adversely impacting the performance of the chiller.

- Provides up to 50% greater energy recovery than all in one tank systems
- The same unit can be used on a 5HP condensing unit or a 50HP compressor
- Allows users to monitor outlet water temperatures to ensure peak efficiency
- Dual wall, stainless steel, exclusive, brazed plate heat exchanger
- Easy set up – Compact design – 5 Year Warranty



COWSCOUT™ ACTIVITY MONITORING SYSTEM

From wherever they are to where you are – KNOW NOW.

- The CowScout™ monitor records individual animal activity every two hours to develop a baseline unique to each animal.
- Activity data is sent to a nearby wireless receiver. The receiver then notifies the CowScout™ internet-based herd database which animals show increased activity.
- The CowScout™ database in-turn sends a notification to your computer, your mobile device, or both – depending on your pre-set preferences – alerting you which animals are showing signs of heat.

- Reduce labor
- Increase pregnancy rates
- Decrease days open
- Limit need for hormones





The herd in your hand

Track cow behavior in real time, any time, with CowScout™ animal monitoring.

Heat detection, eating time, rumination data... all this and more at your fingertips with GEA CowScout™. Monitor your herd with real-time, accurate data, and stay ahead of breeding and health challenges. Choose CowScout™ today and position your dairy for additional automation technology in the years to come.

Real herd data, right in your hand, preparing your herd for the future — GEA CowScout™



BIG SAVINGS on
GEA CowScout™ Systems!

*Limited time only.
See dealer for details.*

GEA engineering for
a better world

gea.com

MUELLER

Upgrade Your Milk Cooling

Paul Mueller Company's Model "OHF" milk cooler arrives on the farm ready for work. Minimal field setup, low installation costs, and a chemical dosing system make the Mueller® Model "OHF" an ideal choice.



Model "OHF" Milk Cooler

Midwest Livestock Systems

ZUMBROTA, MN | MENOMONIE, WI | RENNER, SD
(800) 742-5748 | midwestlivestock.com



MUELLER® MILK COOLING TANKS

MUELLER

THE MILK COOLING SYSTEMS SPECIALISTS™

- Highly-polished Type 304 stainless steel construction
- Inner liner with exclusive Mueller Temp-Plate® heat transfer surface
- Insulated double-wall construction
- Available in sizes from 500 to 8,000 gallons
- Automatic cleaning system
- Adjustable, beam-profile legs
- Personnel access assembly cover swings to the side for easy inspection and servicing
- Coolers meet or exceed all milk cooling and storage standards.



**Mueller 4,000-gallon
Shamrock Farms - Goodhue, MN**



**Mueller 2- 8,000-gallon
Lazy J Dairy - Wolsey, SD**

MUELLER® FRE-HEATER®

The Mueller Fre-Heater® recovers wasted heat from your milk-cooling system and uses it to heat water you use around your farm. This can drastically reduce the cost of hot water in your operation and enhance your profitability.

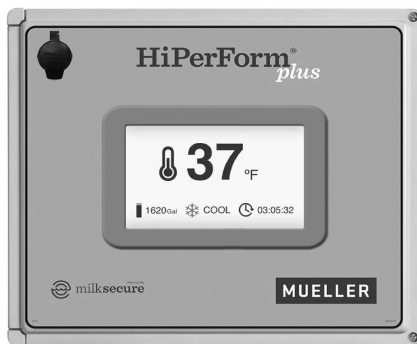
Features:

- Mueller Temp-Plate™ heat transfer surface cools superheated refrigerant from the milk cooling condensing units and harvests the system's wasted heat energy
- A rust-resistant stainless-steel outer jacket requires almost no maintenance.
- Factory-installed anodes provide superior galvanic-corrosion protection for the water storage tank
- 5-year limited warranty - CSA and NRTL regulation compliant
- Industrial =-grade, fully-insulated and glass-lined storage tank

MUELLER



PARLOR &
MILKING



MUELLER HiPerForm® PLUS CONTROL

Designed for use in traditional and robotic dairy farm operations. This wash and cooling control retrofits any milk cooler with program options with remote monitoring.

- Automatic interval agitation
- Electronic time and temperature recorder
- Real-time tank temperature and volume data
- Built-in troubleshooting test program
- Fully-Programmable wash and cooling control
- Selectable drain valve types
- Cooling and wash time delay
- 24 AC or dry switch closure

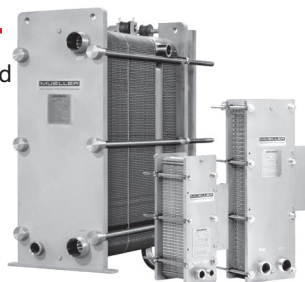
MUELLER® CHILLER



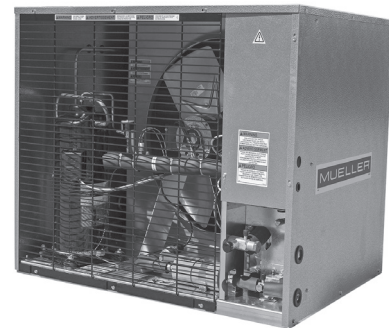
Whether you are cooling milk or produce, Paul Mueller Company offers an array of chillers designed for a variety of industrial dairy applications. Utilizing our Accu-Therm® plate heat exchangers, our chillers provide a superior source of chilled water which allows for rapid cooling of your product. This rapid cooling is beneficial as it inhibits bacteria growth and lowers energy costs. We have various models of chillers and can help you find one that is just right for your specific application.

MUELLER® ACCU-THERM® PLATE COOLERS

- Type 304 stainless steel end frames and stainless-steel compression bolts
- Clean-in-place system
- Single-pass, dual-pass, or multi-pass multi-duty model options
- Custom configuration available for specific needs



MUELLER® DIGITAL E-STAR EVC CONDENSING UNIT



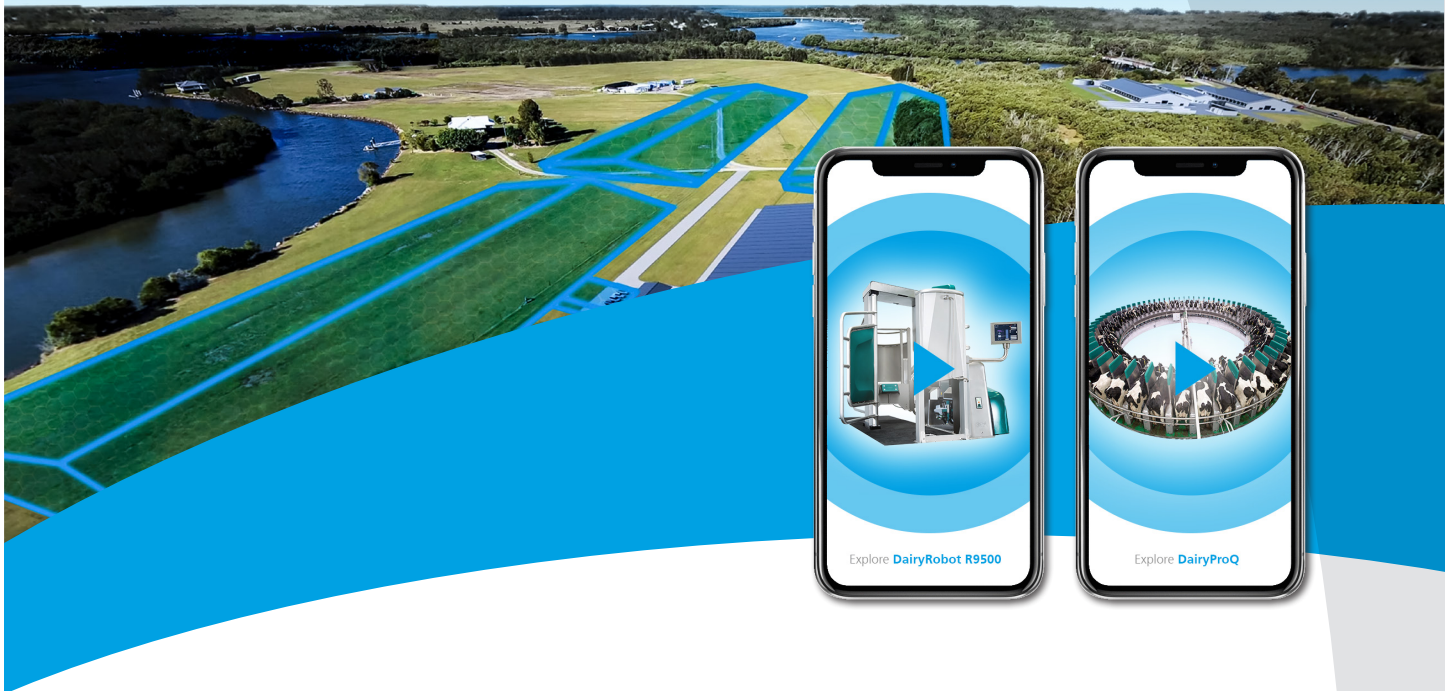
Fine tunes the refrigerant flow to the milk cooler throughout all phases of the cooling cycle by using an electronic valve control (EVC). Constant, precise adjustments result in maximum energy and cooling efficiencies for both traditional and robotic milking systems.

- Proprietary electronic subcooling valve and control
- Designed to handle the large temperature changes required to cool milk.
- Condenser subcooling coil ensures subcooled liquid refrigerant for maximum evaporator efficiency
- Enlarged tube-and-fin condenser with rifled tubing
- Suction line accumulator heat exchanger



Your vision. Our expertise.

GEA has the knowledge and experience to make your dairy's robotic dreams a reality. Let's get started together — today.



Take a virtual tour of our robot barns

- ✓ Explore virtual barn layouts in 3D
- ✓ Watch our robot herd management videos
- ✓ Follow a cow's full lactation, including calving, robot training, breeding, herd health checks and dry-off



DairyRobot R9500
box-style robot



bit.ly/DairyRobot

DairyProQ robot
rotary



bit.ly/DairyPQ



**SCAN THE QR CODES
WITH YOUR
SMARTPHONE CAMERA!**

SCR HEATIME PRO + SYSTEM

Heatime® Pro+ is a powerful, yet easy to use, PC-based system for advanced monitoring of dairy cow herds. With its sophisticated monitoring capabilities, lifetime cow history tracking and rich data analysis capabilities, it eliminates the guesswork and inconsistency of evaluating the reproductive, health, nutrition and wellbeing status of each and every cow. It allows early and proactive action to alleviate the effects of incidents that prevent cows from achieving their genetic yield potential.



Treat sick cows *before* clinical signs appear

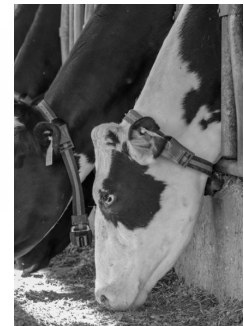
Breed off of *natural heats*

Leave the rest alone to *make more milk*



SENSEHUB™

SenseHub™ Dairy is a sophisticated, modular cow monitoring solution that delivers actionable information on the reproductive, health, nutritional and wellbeing status of individual cows and groups. With SenseHub™ Dairy, dairy farmers can make data-driven decisions for maximized productivity. It offers a choice of collar or ear tag and all parts can be expanded or changed to fit evolving needs. Simple to install, use and maintain, and easily upgradable, SenseHub™ Dairy delivers value from the start, with long-term investment protection.



- Maximize conception rates, production and profitability, with advanced heat and health monitoring
- Optimize heifer reproduction monitoring
- Boost efficiency across your farm with integrated cow monitoring and herd management
- Work with a modular, scalable solution that adjusts as your farm grows

FREEFLOW™

The FreeFlow™ measuring technique is based on the transmission of near infrared (NIR) beams through the milk flow. Using complex analysis of the changes in the IR beam, it is possible to gather information on the milk flow and calculate the accumulated quantities including conductivity detection. This offers the following advantages:

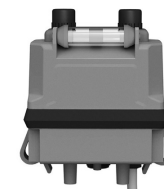
- High accuracy of milk yield and flow rate measurement
- High milk yield resolution recording (10 gr)
- Flow routine monitoring
- Small dimensions
- Continuous free-flowing milk measurement
- Minimal vacuum fluctuations – uninterrupted flow
- No moving or wearing part – zero maintenance
- Long-lasting, stable and accurate measurement
- Immediate detection of a kicked milking cluster



SMART PULSATION

Allflex pulsators are high reliable, even when operating in dusty environments. With just two moving parts, no membranes and no small parts, they require only minimal maintenance or repairs, with no need for tools or special expertise.

- Streamlined design makes them easy to install, monitor, and replace, even during milking.
- Connected to the vacuum line with a stall cock that enables quick and easy on-the-fly assembly or replacement.
- Built-in vacuum monitoring gauge monitors the pulsation and provides at-a-glance indication of a malfunction caused by a hole in liner or a problem in a different component.



BECO PULSATION MONITORING SYSTEM

Pulsation Monitoring 24/7

- Alarm diagnostics, not just a red light
- Easily adapts to all systems

PulsNexus Monitors

- Industry leading 5 year warranty



BECO H-FACTOR MILKING CLAW

- Provides steady claw vacuum/eliminating all claw restrictions.
- Large capacity; 400 CC-7/8", 350 CC-3/4"



G2 FlowNexus

G2 FlowNexus control panel includes panel as shown with the heavy duty piezo buttons. Several different mounting options are available to pair up with the FlowNexus. If pulsation is needed, wire looms and power supplies must be sized appropriately. Air or vacuum valves need to be ordered separately



BECO SCANNEXUS ELECTRONIC MILK METER

- 7/8" accurate milk meter allows for consistent milk outs.
- No maintenance
- No rebuild kits
- No restrictions
- No lifting of milk
- Plug and play setup
- 5 year warranty



BECO GROUP PULSATION CONTROLLER

- Runs up to 60 pulsators
- 4 channels cascading to avoid vacuum fluctuation
- Easy to use programming
- Rate and Ratio's in single increments
- Simple and robust for long life

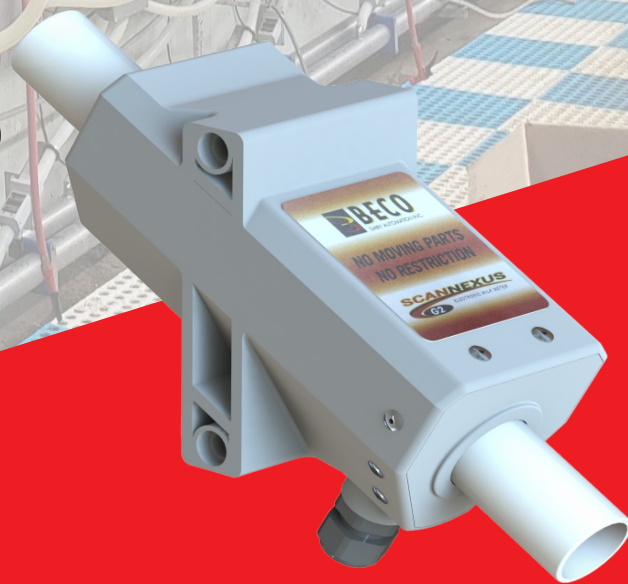


IMMIX G2, "ELIMINATING THE UNKNOWN"

- Milking performance and procedure information to assist in improved parlor management.
- Detacher settings are easily changed with the click of a mouse.
- A BECO 7/8" system that accepts both 7/8" and 3/4" milk hose for maximum milk quality benefits.
- Optional Grab-N-Go feature for vacuum models allowing an operator to attach units without touching a button.
- REAL TIME PIT DATA.
- See all critical parlor performance data at a glance.

**FINALLY, MILK WEIGHTS ECONOMICALLY,
WITHOUT MAINTENANCE!**

NEXUS
G2 BECO MONITORING SYSTEM



WORLD-CLASS, UNRIVALED STAND-ALONE MILK METER

**NO MOVING PARTS / NO RESTRICTIONS
ECONOMICAL WITH A 5YR WARRANTY**

**INTEGRATES WITH ALL SYSTEMS & BRANDS
ACCURATE INDIVIDUAL COW MILK WEIGHTS
NO MAINTENANCE / NO REBUILD KITS**

 **BECO**
DAIRY AUTOMATION INC.



For more information visit www.becoknows.com or call 800-344-7166

WASHING MACHINES

Designed to drive down water, electrical and gas costs while improving productivity, E-Series High Performance Washer-Extractors deliver high-speed extract, an easy-to-install free-standing design, unmatched durability and the ultimate in programmability! E-Series Commercial washers deliver more performance using less labor, natural resources and chemicals. The E-Series front-load washer is available in 20- to 255-pound models.



FS CURTIS - AIR COMPRESSORS

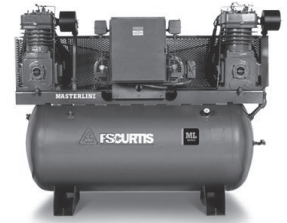
For more than 160 years FS-Curtis products have been passed down from generation to generation, proving their recognized value to our loyal customers. Our Masterline Compressors remain unmatched in terms of durability and performance, along with our rotary screw and oil-less compressor series.

FS-Curtis has earned the reputation for building the most rugged industrial-duty compressor you can buy. Our professional engineering staff and factory-trained distributor network are committed to supplying you with a complete offering of the very best in compressed air equipment.

Screw Air Compressor



Air Compressor



CASTAIR COMPRESSORS



Pumps

- All Cast Iron for long life and quiet operation
- Slow R.P.M. from 420 to 995 for quiet operation and long life
- Tapered roller bearings at both ends of crankshaft for superior support & less friction
- Precision steel connecting rods with automotive type rod insert bearings at crankshaft and needle bearings at wrist pin for long service, life & reliability
- Disc & spring valves
- Pistons have 4-rings
- Centrifugal unloader for loadless start-up every time

Tanks, Motors, Controls

- Powder coated ASME tanks with 4 legs on verticals, channel on horizontals
- ASME safety valves
- Metal belt guard totally enclosed
- Copper discharge & unloader tube
- Heavy duty 1725 R.P.M. industrial motors, with full 15% service factor

UNDER UDDER LIGHTING

Under Udder brings bright LED light to a usually dim space, under the udder, and is engineered to withstand the daily wear and tear of the dairy industry. Its watertight seals, aluminum construction, Polycarbonate lens, and chemical-resistant coating allows direct pressure washing and chemical contact, even on the electrical connections.

- Watertight system
- Chemical resistant for easy cleaning
- Cost and energy-efficient LED bulbs
- Improved cow load time
- 3-year product warranty
- Can be installed in parallel, herringbone, or rotary parlors, and in most automatic milking systems.



We sell Eiko High Bay and Vapor Tight Lights at great prices!

WASH-DOWN BOOSTER PUMP

HP	# OF STAGES	RATED FLOW	DISCHARGE PRESSURE		PIPE TAPPING SIZES	
			@ RATED FLOW	@ NO FLOW	SUCT.	DISCH.
1/2	9	7 gpm	90 psi	130 psi	3/4"	3/4"
3/4	12	7 gpm	123 psi	173 psi	3/4"	3/4"
1	16	7 gpm	162 psi	229 psi	3/4"	3/4"
1 1/2	9	20 gpm	97 psi	143 psi	3/4"	3/4"

PUMP SPECIFICATIONS

- Capacities: to 10 GPM
- Heads: to 500 ft. (216 PSI)
- Pipe Connections: 1" NPT Suction and Discharge
- Maximum Flow: 10 GPM
- Minimum Flow: 1 GPM
- Maximum Suction (Inlet) Pressure: 75 PSI
- Maximum Liquid Temp: 160°F (71°C)
- Rotation: Clockwise when viewed from motor end
- Carry handle: supplied
- Maximum Life with Foot Valve: 10ft. (check NPSH curve)

MOTOR SPECIFICATIONS

- NEMA Standard: 56J frame
- Open drip proof
- 60 HZ, 3500 RPM, single phase (115V or 230V)
- Single phase motors have built in capacitor and over-load with automatic resets
- 10ft. power cord with G.F.I. molded plug



FEATURES

Multi-stage Design: Provides steady, quiet, vibration-free operation.

O-ring Casing Seal: Reliable high pressure sealing with easy disassembly for maintenance or repair.

Impellers & Diffusers: Glass filled engineered composite material with floating impeller design. High resistance to corrosion and abrasion.

Bowls: 300 stainless steel rabbit lock for positive alignment with no gaskets required.

Motors: Close coupled NEMA 56J motors to open drip proof design. Single phase. Ball bearings carry all radial and axial thrust loads. Designed for continuous operation.

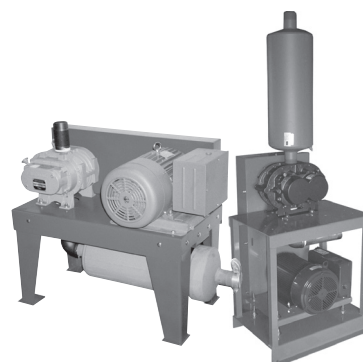
3/4" hose adapters and 4-foot suction hose supplied.

SIGNATURE 2000 BOOSTER PUMP REPLACEMENT PARTS AVAILABLE.

SUTORBILT VACUUM PUMP PACKAGES

DESCRIPTION	SPECIFICATIONS
5 hp System w/o Motor on Horizontal Stand	39 cfm @ 14.5 in @ 2306 rpm
7.5 hp System w/o Motor on Horizontal Stand	75 cfm @ 14.5 in @ 3086 rpm
7.5 hp System w/o Motor on Horizontal Stand	70 cfm @ 14.5 in @ 1906 rpm
10 hp System w/o Motor on Horizontal Stand	85 cfm @ 14.5 in @ 2250 rpm
15 hp System w/o Motor on Horizontal Stand	136 cfm @ 14.5 in @ 2000 rpm
20 hp System w/o Motor on Horizontal Stand	194 cfm @ 14.5 in @ 2400 rpm
5 hp System w/o Motor on Horizontal Stand*	39 cfm @ 14.5 in @ 2305 rpm
7.5 hp System w/o Motor on Horizontal Stand*	70 cfm @ 14.5 in @ 1906 rpm
10 hp System w/o Motor on Horizontal Stand*	85 cfm @ 14.5 in @ 2250 rpm
15 hp System w/o Motor on Horizontal Stand*	136 cfm @ 14.5 in @ 2000 rpm
20 hp System w/o Motor on Horizontal Stand*	194 cfm @ 14.5 in @ 2400 rpm

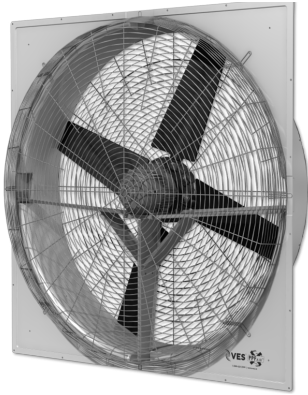
* Vertical stand model available.



E-ZEE RBS VACUUM PUMP

- Durability, reliability and efficiency
- Rigorously tested to meet strict performance criteria to ensure unequalled service life under the most severe operating conditions
- Vacuum to 15 in Hg
- Helical timing gears for smooth and quiet operation at all speeds
- Reliable dual splash lubrication on both the drive and gear ends for longer product life
- Three-lobe rotors offer the highest performance and efficiencies
- Reinforced roller bearings are calculated for a lifespan of 100,000 hours under the most severe operating conditions
- 2 year warranty

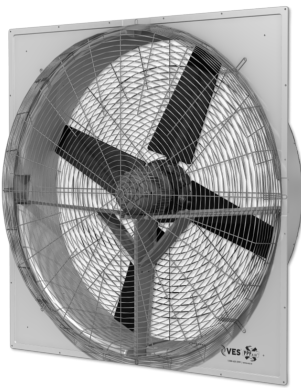
35 pump head
55 pump head
65 pump head
75 pump head
85 pump head



VES POSITIVE PRESSURE FAN SERIES

The Positive Pressure Fan Series (PPF) forces fresh air into the barn where it can then be redistributed to the animal level. The strong insulated outside shutters are powered by an actuator to keep a tight seal when not operating and a fully open position for optimum performance when the fan is running. Raising the bar in quality, looks & performance, PPFAir™ fans have a fiberglass housing resulting in a smooth aerodynamic shape. Built with a tighter blade clearance to reduce air drag and noise while providing increased strength, performance, and durability.

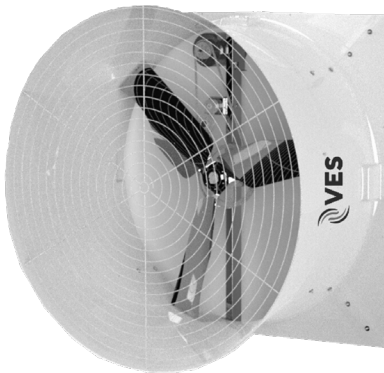
- Direct Drive or Belt Drive
- Fiber reinforced poly blades
- Available in 72", 55", and 36"



ECVAIR™

ECVAir™ Technology creates an extreme air velocity for cow cooling, surrounding the animals while standing or lying. Controlled and directed waves provide fresh air to animal, insect control and dryer bedding to improve animal health. Covering more than 15,000 square feet using minimal amounts of power, the ECV ventilation system provides insect control, dry bedding, and employee comfort. Deflectors can be independently adjusted to allow for customized air flow to reach the optimal velocity at the animal level.

- Direct Drive or Belt Drive
- Fiber reinforced poly blades
- Turbo cone
- Adjustable air flow deflectors
- Available in 72", 55", and 36"



VES AFR

AFR direct drive fans, pull air effectively through your barn over a wide range of static pressures. The blended housing shape of this fan make a large impact in a small area of wall space. The VES next generation AFRAir™ fan series is the world leader in variable speed technology, designed to continually draw air the length of the barn and exhaust contaminated air from the environment. The superior air moving capabilities of the AFR requires fewer fans to achieve optimal air flow.

- Direct Drive or Belt Drive
- Paddle fiber reinforced poly blades
- Available in 72", 55", 36", 24", 20", 16", and 12"

ANIMAL WELLBEING. CONNECTED.

 **VES-Artex DairyBOS®**

Fully integrated and automated
barn operating system

VENTILATION + LIGHTING + COOLING + COW COMFORT

The future of animal health and wellbeing is DairyBOS® from VES-Artex – the industry's most comprehensive and connected environmental control system. A single interface manages all of the ventilation, lighting and cooling systems that drive animal comfort, welfare and performance. From any connected device or computer. Only with VES-Artex. Only with DairyBOS.

[Learn more at VES.co.](https://www.ves.co)

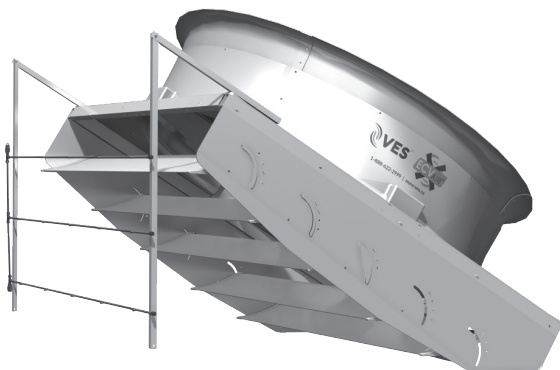


CIRCULATING FANS

Using ECVAir™ technology, and state of the art blade design, the Blast 72" & 55" are designed for performance, durability and optimum air throw and coverage. A multipurpose fan perfect for industrial applications used to cool and create consistent temperature in buildings.

- Belt Drive
- Low speed 100 CFM per watt with VFD (variable frequency drives)
- Easy to clean
- Sealed bearings, no maintenance required
- Fiberglass corrosion-resistant housing
- 50" round; 36", 55", and 72" square

VES HIGH PRESSURE FOGGING SYSTEM



A high-pressure fogging system can be a critical component of a complete system or a stand-alone product to control temperature. Reducing heat stress can improve milk production, animal health and fertility.

- High quality
- Easy installation
- Low maintenance
- Customized system
- Pumps are easy to maintain and service
- Single or three phase totally enclosed fan-cooled premium efficient motor
- Nozzles

- o All stainless steel
- o Anti-drip check valve included
- o Flow rates: 0.036 GPM @ 1000 PSO

EASYFIX- FREESTALL CUBICLES

Deliver the freedom of the outdoors-indoors and is proven to maximize cow comfort, improve safety and increase performance.

Flexible cubicle system accommodates the size of each cow, encourages cows to lie correctly and for longer periods. Increased lying times combined with improved cow comfort leads to higher milk production.

- Flexible plastic pipes, rubber loop and rubber neck rail couplings.
- Fixed and flexible rubber couplings now available.
- Post manufactured from 4mm box steel
- Easy to install and adjust.
- Available in red, green and blue.
- 10 Year Warranty



EASYFIX-JUPITER F

This cow mat incorporates an integrated brisket board at the front and pillow on two sides. This unique feature is a 'world first' and ensures optimum positioning of the cow when lying in the cow cubicle.



The cow mattress has a 45mm layer of PU latex foam, creating a cushioned top surface for maximum comfort. The back of the cow mat has a sloped and non-abrasive profile which ensures animal waste is pushed into the passageway. Designed with a hidden interlock the mattress creates a seamless finish.

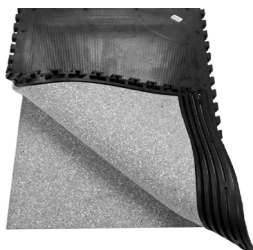
- Natural rubber compound.
- 45mm mattress – 50% foam and 50% PU.
- Mattress enclosed in a 500 micron sealed wrapper.
- Sloped non-abrasive profile at the rear.
- Hidden interlock creates a seamless finish.
- To adjust the width, spacers are available
- 10 Year Warranty

EASYFIX- NEPTUNE

A cubicle mattress offering the ultimate in terms of cow comfort. The cubicle mattress has a 50mm layer of latex foam, is interlocking on two sides with a sloped profile at the rear. Cow's natural resting position is supported by the soft lying area with the center of the mat.

- Natural rubber compound.
- 500 micron sealed wrapper enclosing 50mm latex foam.
- Foam 50% latex and 50% PU.
- Sloped profile at the rear.
- 10 year warranty

Dimensions:
Width: 44 3/8"
Length: 72"
Depth: 2 1/2"



EASYFIX-MG MOTION

A "penny" high grip interlocking natural rubber compound mat provides dairy cows with an excellent foothold in walking and standing areas. Suitable for use with automatic scrappers and robotic scrappers, which have been adjusted for use on rubber floors. Ideal for cleaning with a pressure washer or water hose.

'Penny' grip for maximum foothold and comfort. Strong interlock on two sides creates a seamless joint. Recessed holes around the edges facilitate stainless steel fixings. Easy to clean with water or brush scraper and has a 5 year warranty.



EASYFIX- SOFT FLOOR

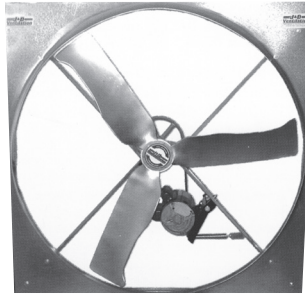
For parlor pits
Excellent anti-fatigue properties.
Very easy to install.
Resistant to milking machine acids.
Reduces stray voltage.

- High grip surface.
- EVA material.
- Interlocking on four sides.
- Available in blue & green.
- 5 Year Warranty



J&D GALVANIZED PANEL FANS

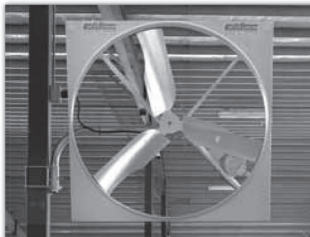
- Highest airflow in a circulation fan
- G-90 galvanized 18-gauge frame
- Full 2-year motor warranty
- Cast aluminum blades available on 50" models



SIZE	MOTOR	CFM	DESCRIPTION
50"	1 HP	24,200	Single Phase, Belt Drive, 6 Galv. Blades
55"	1.5 HP	29,600	Single Phase, Belt Drive, 3 Galv. Blades
55"	1.5 HP	29,900	Single Phase, Belt Drive, 5 Galv. Blades
60"	2 HP	37,600	Single Phase, Belt Drive, 3 Galv. Blades
50"	1 HP	23,000	Three Phase, Belt Drive, 3 Galv. Blades
55"	1.5 HP	28,700	Three Phase, Belt Drive, 5 Galv. Blades
60"	2 HP	37,850	Three Phase, Belt Drive, 3 Galv. Blades

Optional brackets can be ordered separately. OSHA requires a 7' mounting height. Many other models available.

50", 55", & 60" PANEL FANS



- 50", 55", and 60" models ship fully assembled and secured to metal and wood skids
- Cast steel pulleys
- 50", 55", and 60" models include an auto belt tensioner to reduce bounce at startup and provide self-adjusting uniform loading throughout the life of the belt for high efficiency.
- Shaft bearings are eccentric locking, pre-lubricated, permanently sealed, rubber mounted for smooth operation and reduced blade fatigue, and are covered by a Three Year Warranty
- Wide assortment of optional mounting brackets for wood and steel posts for precise airflow
- Motors have completely sealed ball bearings and are covered by a Two Year Warranty

J&D Manufacturing's Panel Fans have a rugged x-frame mount with an efficient motor and a powerful balanced blade that is designed to create comfortable air velocity.

**Smaller fan sizes available*

MEGA TORQUE



- Maintains a continuous high level of performance with no power loss or reduction from aging belts and pulleys
- Premium-efficient industrial motor
- Inverter ready - VFD (Variable Frequency Drive) compatible (VFD not included)
- Aluminum shutter
- One-piece molded cone
- Heavy gauge stainless steel shutter clips
- Heavy duty guard
- Drainage holes in the bottom of the housing to drain moisture
- 24 Month Warranty on motor and torque drive
- 10 Year Warranty on propeller
- 20 Year Warranty on fiberglass housing



72" FIBERGLASS TORQUE DRIVE EXHAUST FAN

Save Time & Money - No Belts to change, No pulleys to Maintain, No Greasing Motor or Bearings

AO SMITH® CONSERVATIONIST® BT 80

- PermaGlas® glass lining prevents tank corrosion
- Small diameters and shorter heights for greater installation ease
- Handhole cleanout for easy maintenance
- Automatic safety shutoff if pilot is extinguished
- Fully automatic controls

Model No.	Gallon Capacity	BTU/H Input	Recovery GPH Temperature Rise			Height Dimensions (In.)	Diameter Dimensions (In.)
			40° F	100° F	140° F		
BT-800	74	75,100	40° F	100° F	140° F	61 1/8	26 1/2
			182	73	52		



BARN

AO SMITH® MASTER-FIT® BTR-197

- Ideal in new construction and replacement applications
- Multiple water connections
- Low installation clearances
- The ELIMINATOR™ Self-Cleaning System
- Three water connection options
- Permaglas® Ultra Coat™ Glass lining

Gallon Capacity	BTU/H Input	Recovery GPH Temperature Rise			Height Dimensions (In.)	Diameter Dimensions (In.)
		40° F	100° F	140° F		
100	199,000	40° F	100° F	140° F	75	27.5
		482	193	132		

AO SMITH® CYCLONE® MXi-BTH- 199

- Up to 98% efficient
- Intelligent Control System with LCD Display
- Precise temperature control adjustable from 90 to 180 degrees
- Submerged Combustion Chamber, with Helical Heat Exchanger Coil
- Ultra-Low Nox Operation
- Power anodes standard on all models
- 3-Year limited tank and 1-Year limited parts warranty

Gallon Capacity	BTU/H Input	Recovery GPH Temperature Rise			Height Dimensions (In.)	Diameter Dimensions (In.)
		40° F	100° F	140° F		
100	199,900	40° F	100° F	140° F	76	27.75
		588	235			

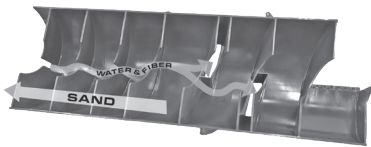


SAND RECOVERY SYSTEMS



What "separates" our Sand Recovery Systems from other sand separation equipment?

- Cleaner sand
- Low energy usage
- Less wear on equipment
- Less cost to purchase, operate and maintain
- Operates with broad range of sand sizing

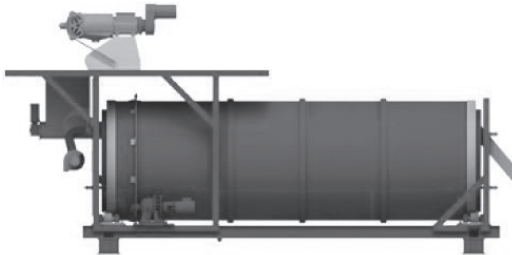


DariTech's One Shot and Sand Cannon use an internally flighted auger to lift, convey and clean sand laden manure. The internal auger uses less energy, and wear is greatly reduced by the sand being rolled uphill without the drag of conventional augers.

The internal flight of the DariTech SRS carries the settled sand and dirty water up the tube. With the flight attached to the wall of the tube, the sand is allowed to settle in the process of moving to the top. With the sand settled in the flight, the fiber and water escape through the split flights at the top (illustration "A") and cascade over the standard flights down the inside of the tube. Once the fiber and water reach the double flight (illustration "B"), the water and fiber exit the tube through the gapped double flight.

At the sand discharge end, with the vast majority of fiber removed, a small amount of water can easily finish cleaning the sand. Free of fiber, the rinsed, clean sand dries quickly without need of vibration or mechanical turning to prepare for bedding.

BEDDING MASTER



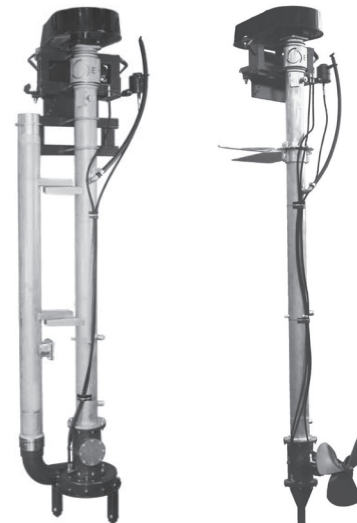
DariTech is proud to introduce our in-vessel composter, the BeddingMaster. By combining the age old science of composting with the knowledge and wherewithal of DariTech, dairies will be able to say goodbye to sawdust and shavings, and hello to recycled manure as bedding for their cows. Not only that, but they will be able to do so at a cost far lower than has been previously available in systems utilizing similar science. Let us help you find which model will work best for your needs.

Features Include:

- Proven composting technology
- Fixed ends provide greater capacity for better value
- Heavy rubberized industrial coating
- Internal boards protect vessel from heat fluctuations
- HDPE boards protect inside of vessel from wear
- Heavy duty drive system, idler wheels and bearings for longevity

GREENLINE E-SERIES PUMPS

E-series manure pumps bring together a new level of quality to the industry. DariTech has designed the E-series for easy installation and field service. Built with heavy galvanized tubes and mounting hardware, along with interchangeable components on all pumps and agitators.



BARN



DURA-CHAIN SCRAPER XTREME DRIVE AND DOUBLE XL DRIVE



Powerful Drive Units can run longer distances, meaning fewer systems and requiring less space.

SELF-LEARNING AND EASY TO USE CONTROL PANEL

The Scraper-Boss PRO adapts to changing conditions, delivering the ultimate level of animal protection.

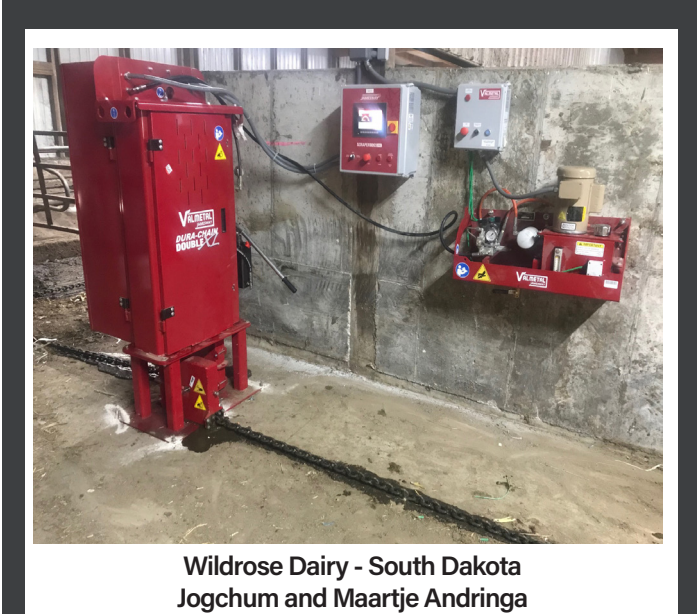
PROVEN DURABILITY

Jamesway's Xtreme-Series chain with deep hardening is recommended for maximum wear resistance.

BARN

VALMETAL PIT PUMP/AGITATOR

Offering a variety of pumps, agitators & agitator-pumps of every size. All pumps feature an open impeller design to allow pumping of solid-laden waste water efficiently. Cutting blades are also available for installation on pump intake plates to cut large fibers as they enter the pump housing. All agitators come equipped with a hardened steel knife directly behind the propeller blade.



**Wildrose Dairy - South Dakota
Jogchum and Maartje Andringa**

MLS replaced an older system with 4 - Jamesway Dura-Chain Double XL drive units, 16 - Dura-Chain Xtreme corner wheels, 1 - Scraper Boss Pro Master Control Panel with internet access & 3 - slave control panels with automatic chain tensioners. We also rebuilt all 16 - V-Blade Scrapers & installed 2800 feet of new chain.

ELECTRIC CHOPPER PUMP (Direct or Belt Drive)

3 HP - 75 HP
250 GPM to 3,000 GPM @ 20 TDH

ELECTRIC AGITATOR PUMP (Belt Drive)

15 HP to 75 HP
500 GPM to 2,000 GPM @ 20 TDH

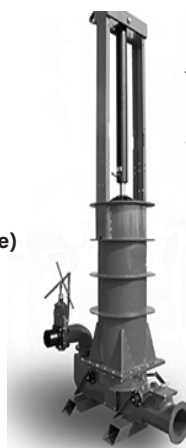
ELECTRIC AGITATOR (Belt Drive)

7 1/2 HP to 40 HP
8,000 GPM to 20,000 GPM (Displacement)

ELECTRIC HIGH-PRESSURE IRRIGATION PUMP (Direct Drive)

30 HP to 75 HP
300 GPM @ 110 PSI to 600 GPM @ 140 PSI

LIQUI-TRANS PISTON TRANSFER PUMPS



Transfer liquid manure long distances with low power requirements. The Liqui-Trans is an excellent choice anywhere that power availability may be limited. Use for liquid manure up to 10% solids.

- Easy to install and easy-to-maintain
- Extremely reliable choice for long-running hours
- Compact unit size
- Quiet, smooth operation



XTRA-PRESS MANURE SEPARATOR SYSTEM

The Xtra Press allows you to make bedding from manure! Reduce the need to stockpile bedding and the total manure volume to store and spread. The Xtra Press has a unique vibrating screen that allows for increased capacity and product dryness for optimum bedding quality. Fully automatic operation, controlled by an easy-to-use touch screen.

- Air-operated exit doors ensure uniform bedding quality
- All stainless steel body
- Reliable cyclomotor gearbox drive
- Stainless steel high-precision 4-piece screen
- Easy and economical to service



PRO-FEED 2020 - SELF PROPEL FEED PUSHER

The Pro-Feed 2020 is a self propelled feed pusher with a unique auger designed to push the silage or hay back to the animals in a fluffy way, increasing odor and palatability. It is well known that the silages and forages served like this increase the dry matter consumption and consequently the production of milk.

- Robust, waterproof, easy-to-use touch screen controller that can be controlled from a computer, tablet and cell phone
- Error notifications can be sent via text message
- Remote troubleshooting with a Valmetal specialist via Wi-Fi
- Works with two 12V 105Ah gel batteries that require no maintenance and has a long service life.
- Motors are brushless and maintenance free
- Electric loading station is a simple 1/8" plate is very resistant even to the load of a tractor
- Simple, effortless and intuitive installation
- Overall dimensions: 79" x 43-1/2" x 33-1/2"
- Weight: 1540 lbs



DAIRY PANELS, HEADLOCKS, GATES, FREE STALLS & FENCING

Comfort, Strength, Versatile...

Providing popular stall and mounting designs.

- Heavy-duty and easy to install
- Comfortable stall designs
- Various mounting options

Freestall Designs with superior comfort and usage.

- Can be used with any bedding system
- Excellent stall layouts and unobstructed lunge space
- Unique design offers proper neck rail height
- Available in various lengths
- Strong high-tensile 2 3/8" OD 10-gauge pregalvanized tubing
- 48" and 46" standard neckrail height
- Custom stall designs are available

Contact us to discuss your particular barn design and product needs.



We offer a broad array of dairy panels, headlocks and fencing from top quality manufacturers.

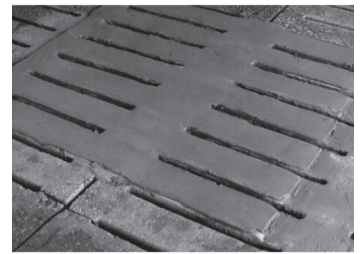


CON-KORITE XTRA MORTAR

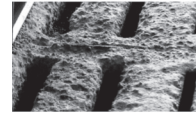
Use this mortar when you want to make a repair one time! Con-Korite develops 3,000 psi compressive strength in one hour and nearly 10,000 psi in 28 days. This unique formula has exceptional abrasion, salts, and sulfates resistance—making it the longest-lasting and most cost-effective option for severely worn (any thickness greater than 1/4 inch) slats and floors. It is preferred by producers for repair of broken slat edges and to restore eroded slats even down to the rebar. Being a concentrate, Con-Korite can be extended (Con-Korite X'TEND) with coarse sand or pea gravel up to 1:1 to grout deep holes and make repairs in medium-duty areas such as troughs and rough pen floors (2 parts mortar to 1 part mortar sand).

Typical coverage at 1/4 inch (55 lb bag): 25 sq ft unextended 37.5 sq ft mixed 2:1 with sand (Con-Korite X'TEND) 50 sq ft mixed 1:1 with sand (grouting over 1 inch)

DESCRIPTION
Con-Korite 60 lb Kit
Includes: 55 lb Con-Korite Xtra Mortar, 2 qt KB25 Acrylic Resin, and 1 Set Control Pouch
10 lb Trial Size
55 lb pail, Con-Korite Xtra Mortar only



After



Before



After



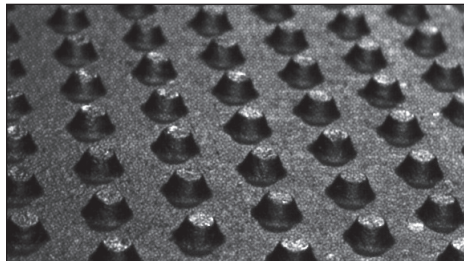
Before

AGROMATIC RUBBER FLOORING

KRAIBURG RUBBER FLOORING

Available in 8 standard sizes. Mix and match to fit most areas.

- 1-inch-thick rubber flooring—the only 1-inch-thick flooring on the market
- Puzzle-shaped edges compensate for natural thermal expansion and provide a practically seamless surface
- Perfect for renovating slippery or dangerous concrete
- Improves animal health, productivity, and longevity



AGRI COMFORT: FOAM MATTRESS SYSTEMS

4GS Soft Beds • 8GS Soft Beds

Our highly advanced Huber Technik stall mattresses provides dairy cows with an ideal comfort surface to relax joints, enhance health and improve overall productivity.

Combining a specially designed, 100% virgin rubber top cover and composite Agglorex latex foam substructure, this mattress system offers the latest in soft bed technology, with tensile strength that has been tested and proven.

- Exclusively new tire compound
- PAH and ISO 9000 certified
- Customized sizes on top-cover and latex foam available upon request.



EDSTROM COOL SENSE™ MOTION COOLING SYSTEM

The Cool Sense™ motion cooling system is an effective and efficient way of keeping dairy cattle cool when the temperature rises. Cooling is achieved by automatically showering dairy cows with a coarse droplet shower. Showering cows immediately after milking helps reduce heat stress, which in turn increases their feed and water consumption and milk production.

- Control the amount of water used by adjusting the shower time—Minimize wasted water
- Easy and economical to install and operate—Quick return on investment
- Adapts to various lane widths and barn configurations
- Unidirectional or bidirectional options
- Two-year factory warranty on controller
- Motion and temperature activated



BARN

FUTURECOW™ COMFORT BRUSH™

The FutureCow ComfortBrush was designed with the highest standard of durability and cow comfort in mind. This ComfortBrush is now University tested and validated as not only useful, but also encouraged on a dairy farm.

The FutureCow ComfortBrush is easy to install. It has been proven effective at improving cow's overall morale by creating a less stressful environment. The end results is that the cows are cleaner, happier, and more productive, making for a more successful dairy farm.



The Benefits:

The Brush

- 2 year life span
- High quality brush made with high-tech nylon co-polymer
- Softer bristles do not irritate the delicate parts while more bristles provide a more thorough scratch
- Brush can be flipped if wearing occurs on one side or the other

Patent Pending Omni Joint

- Allows the ComfortBrush to swing as much as 45° vertically, while still allowing 360° horizontally
- Allows cows to position brush for complete body coverage
- Intuitive Motion Sensor
- The FutureCow ComfortBrush is the ONLY cow brush that automatically starts up when the cow comes in to view of the sensor

Soft Start Feature

- The ComfortBrush ramps up slowly to optimal speed

Customizable Features

- Reversing can be disabled
- Overload can be customized for higher or lower sensitivity than programmed
- Brush speed is adjustable
- Voltage is based on dairy needs



DOORS

HIRED-HAND® ROLLSEAL® DOORS

MODEL RS-400 DAIRY DOOR

SIZE
12' w x 10' h
14' w x 10' h
15' w x 10' h
15' w x 12' h
18' w x 10' h
18' w x 12' h
20' w x 10' h
20' w x 12' h
14' w x 14' h

- Totally enclosed box motor operator
- Manual override: crank door up or down during power outage

MODEL RS-300 DAIRY DOOR

SIZE
8' w x 8' h
8' w x 10' h
8' w x 12' h
10' w x 8' h
10' w x 10' h
10' w x 12' h
12' w x 8' h
12' w x 10' h
12' w x 12' h

- RS-300 & RS-400
- Aluminum tracks/cover
- RollSeal patented seal system, 3 plies of fabric, double seal with dead air space
- Custom sizes available by special order
- Motorized units have high-speed open and close
- If damaged by tractors or skid loaders, fabric can be repaired or easily replaced



Tired of replacing or repairing damaged overhead doors on freestall barns?

RollSeal® doors offer a unique design providing outstanding seal against weather and air infiltration. Available in several materials, fabrics, speeds, and accessories in sizes up to 30 ft wide by 20 ft high.

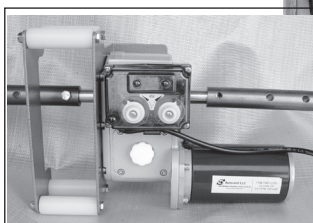
BARN

CURTAINS

AUTOVENT CURTAIN SYSTEM for freestall barn

The Curtain Drive Motor System has a "Simplistic Design". It uses a 24 volt motors and no electrician is needed.

- Takes the work out of curtain ventilation
- Simplicity in design for straightforward functionality
- Motors connect directly to manual or thermostat control or optionally controlled directly by the new computerized system VentGenie
- Fifteen feet of wire on the motor with cord guide to keep wire from getting tangled or ruined
- Cord guide pre-mounted and wire threaded from the factory
- Safe 24 volt motors, no electrician needed simple installation for DIY



Curtain Automation
CURTAIN DRIVE MOTOR SYSTEM



DAIRY CURTAINS

13-OZ VINYL CURTAIN

Heavy-duty curtain material where natural light is desired.

*Note: Deduct 4" for hem.
Also available in 48" and 60" sizes*

DESCRIPTION
72" w
84" w

18-OZ VINYL CURTAIN WHITE

DESCRIPTION
60" w
72" w
84" w

Available by special order.

10-OZ FROSTY CLEAR VINYL CURTAIN

DESCRIPTION
60" w
72" w

Available drop ship only.



Call Midwest Livestock Systems for your dairy curtain needs!

- Proven roll-up system
- Tight roll helps prevent wind damage and water bagging
- Multiple wind retainer options for different conditions: 1 3/8" galvanized pipe, 3/4" galvanized conduit, or seatbelt strapping
- Roll-up gear boxes can be manually cranked or equipped with power unit
- 13-oz semiclear vinyl or 18-oz white vinyl materials for durability

THORP - STANDARD STAINLESS STEEL DOORS

- For interior and exterior use that is affordable and long-lasting
- Great for any corrosive area
- Single or double doors available

Door construction:

- Flush door with edge seam
- Constructed of 18 ga. 304 stainless steel with vertical grain
- Insulated with polystyrene core or optional fire rated plywood
- Argon gas or safety glass windows available

Frame construction:

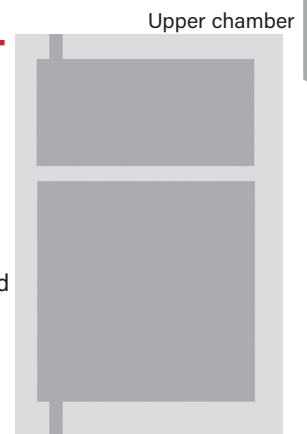
- Masonry frames have reinforced recessed holes for anchoring and 2" or 4" face
- Standard studded frame has 4 1/2" or 6 1/2" jamb depth
- Three sided frame - threshold available
- 16 ga. 304 stainless steel with vertical grain
- Mitered and welded faces
- Hinge reinforcements, 85# per hinge
- Prepared for strike with reinforcement tab



BARN

DCC WATERBEDS ISO

The front and rear chambers of the DCC Waterbeds ISO are filled separately. The front pillow provides a consistent cushion for the knees to prevent knee injury. The rear pillow floats the hocks and udder with more consistency. With a fixed volume of water, DCC Waterbeds ISO support the cow's body weight through pressure, mirroring the cow and floating her pressure points.



Upper chamber

DCC Waterbeds™
USA

Lower chamber

RITCHIE DRINKERS & PARTS

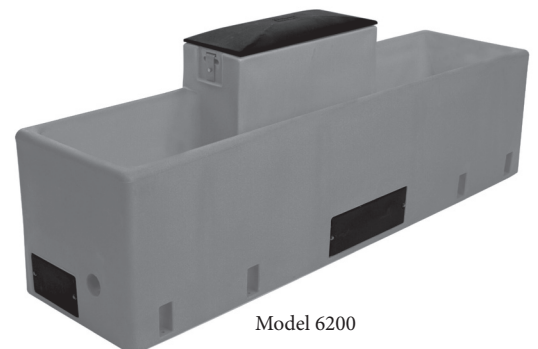
- Industry leader for animal watering since 1921
- 10-year limited warranty on poly and steel products. Poly products warrantied for 5 years full, followed by 5 years prorated. Steel products warrantied for 10 years: 100% on stainless troughs against manufacturing defects and corrosion; 1 year full and 9 years prorated on casing and cover. No competitors offer a warranty this strong.



MIRAFOUNT WATERER

BIGspring is a complete line of constant-flow watering systems ideally suited for free-stall dairy operations and large feedlots. If you raise beef or dairy cows, you are sure to find the perfect BIGspring model to fit your needs.

*We also carry waterer parts for
Mirafount, Johnson, Bohlmann,
and Pride of the Farm.*



GEA AUTOMATIC CALF FEEDER



Automatic feeders can be used in conjunction with the DairyPlan C21 herd management program to create a highly economical calf management system. Every calf will be recorded and monitored from the day it is born.

This feeding system record feeding and drinking habits, store the data, and report any deviation immediately.

The automated calf feeding station is available two ways—as a milk powder only unit or as a combination milk powder and fresh milk unit.

Expandable feeding options—each automated feeding station can be connected to two feeding stalls and feed a total of 60 calves. Two additional feed stalls can be added to the feeding station for a total of 80 calves. Each feed stall incorporates an antenna that identifies the individual calf via an ear tag or neck tag.

Stand-alone automatic calf feeders for flexible feeding on the spot—the stand-alone automatic calf feeders have their own computer which means that they are flexible and designed for individual use. You can manage changes immediately and program the automatic calf feeders accordingly.

Adding the optional communication gateway and DairyPlan CalfFeeder module to the DairyPlan C21 herd management software allows users to have all the information of the stand-alone unit conveniently available on their herd management computer.



- Healthy feeding of calves with less labor
- Flexible, individual feeding on the spot
- Each station can feed up to 80 calves
- Durable — low maintenance costs

CALF CARE

AGRIPLASTIC: INDOOR CALF HOUSING

Made for short-term use, our Starter Pens help smooth your calves' transition to a Calf Hutch, Indoor Pen, Group Hutch or Robotic Feeding system. Pens for calves 0-10 days old.

The labor-efficient units come in three distinct styles to suit your operation's needs, and all of the pens are molded in one piece from high density polyethylene for durability and easy cleaning.

3 Pen Options:

- Starter Pen
- Elevated Starter Pen
- Movable Starter Pen

Standard Features:

- Slam Latch is easy to open and stays securely closed.
- Two rear Rotary Vents allow for maximum airflow.



ULTRA FLEX-PEN™*

Keep your calves healthy and happy with the next generation of the Flex-Pen! The center panel can be removed for ULTRA versatility for either single or group calf housing. Flex-Pen is for calves up to 12 weeks old.

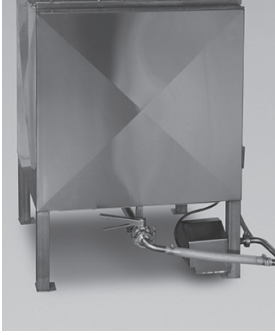
These pens are also modular for ULTRA flexibility. Add on single pens for individual calf housing, or combine it with group pens – all in the same row.

Separate water and feed buckets and bottles, as well as molded calf dividers, help prevent cross-contamination. And the lighter weight construction is easy to keep clean and even easier to move!

*Patent Pending.



'MILK JUG' MILK COOLING TANKS



Until now, the only solution for cooling milk for special calf feeding needs was to install a full sized bulk cooler. And with very limited space in the equipment room or calf barn, this was not a viable solution. The Milk Jug is specially designed for these special applications where waste milk needs to be cooled in a limited space.

The Milk Jug comes in 50, 100 and 200 gallon sizes. Connecting the Milk Jug is extremely simple, requiring a standard 36" door.

Features:

- Insulated to store waste milk before or after pasteurization.
- Chills and stores raw milk prior to pasteurization, greatly reducing bacteria growth compared to water cooled tanks.
- Designed to hold chilled pasteurized whole milk (38° - 40°) for the HL 100 or other automatic calf feeding systems.
- Space saving design: 34" x 34" footprint.
- One-step CIP system; 10 minute wash cycle.
- Automatic Empty Shutoff.

Models/Sizes:

- Small footprint on all sides (34"x34") to fit through a standard 36" door, making it very versatile for most settings.
- MJ 50 - 50 gallon unit 34"x34"x60"
- MJ 100 - 100 gallon unit 34"x34"x62"
- MJ 200 - 200 gallon unit 34"x34"x83"

MILK TAXI 4.0



Simple dosing: Smart Mix

9 programmable dosing levels with a mixing calculator provide exact dosing within 50 ml of any amount without dripping. Exact level detection in the tank measures the flow rate and optimizes the metering accuracy of the feeding. The handle is ergonomic and very light.

Sturdy 4-wheel undercarriage

The milk taxi is extremely stable thanks to the 4 wheels and low center of gravity; it will not tip over when full, even when moved quickly.

Copes even better on all terrains

The 15 1/4" front wheels and a higher floor clearance means that uneven terrain or small obstacles can be overcome easily.

Milk Taxi
4.0



4.0
MilkTaxi
The best is now even better

4324 N. Cty Rd. P., New Franken, WI 54229
(920) 680-5976 fax: (920) 866-9819
info@calfstar.com www.calfstar.com



CALF FEEDING SOLUTIONS

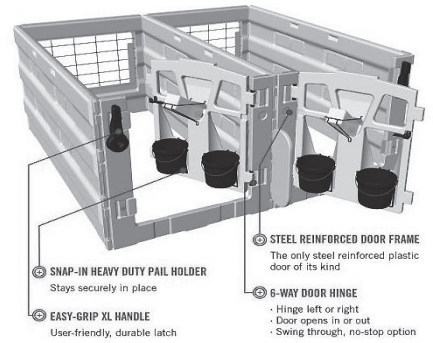
Custom made for your farming needs!



CALF-TEL CALF PEN

Calf-Tel now introduces the next generation pen front design. The new Pen Front works seamlessly existing Calf-Tel pens, but now provides a number of enhanced features unique to the Calf-Tel Pen System designed to improve the efficiency and productivity of your operation.

- Exclusive 6-way door opens inward or outward to meet individual preference
- Door can be hinged on either right or left side
- Easy-grip XL handle
- Heavy duty snap-in pail holder.



WESTWAARD PASTEURIZERS

20-gallon

- Pump Agitation and Dispense System
- Automated Pasteurization Cycles
- Re-heat & Pre-cool Options Standard
- Programs for Colostrum Pasteurization and Colostrum Thaw for Frozen Bags
- Manual Wash
- Large PLC Screen Provides Information Throughout Cycles
- Electric Heating
- 30 Amp 240 VAC 1 Phase 4-Wire



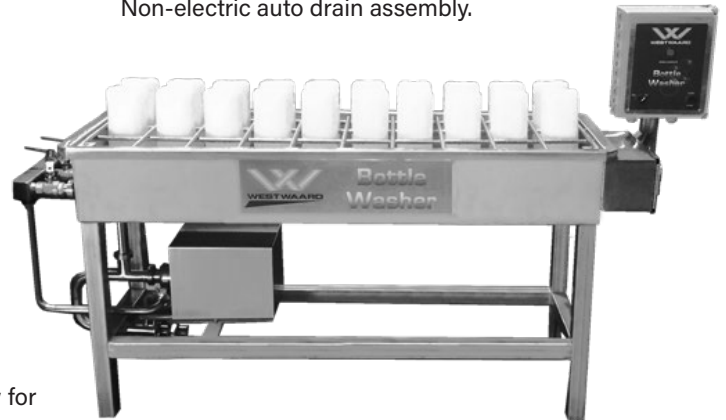
40/60/90-gallon

- Pump Agitation and Dispense System
- Automated Pasteurization Cycles
- Re-Heat & Pre-Cool Options Standard
- Programs for Colostrum Pasteurization and Colostrum Thaw for Frozen Bags
- Automatic C.I.P. System
- Optional Peristaltic Chemical Pump
- Large PLC Screen Provides Information Throughout Cycles
- Electric Heating
- 40 Gallon - 40 Amp 240 VAC 1 Phase 4-Wire
- 60 Gallon - 50 Amp 240 VAC 1 Phase 4-Wire
- 90 Gallon - 70 Amp 240 VAC 1 Phase 4-Wire



WESTWAARD BOTTLE WASHER

Westwaard also manufactures a full line of bottle washers. Offering models that combine with the versatility and flexibility of the Westwaard Pasteurizer, as well as standalone units. All stainless steel pump assembly for easy service and excellent durability. Non-electric auto drain assembly.



POLYDOME CALF HOUSING

PolyDome will help put money back into your pocket faster. Why risk burnt lungs, frozen ears and tails? PolyDome will help eliminate ammonia build-up. Your heifers will be part of your moneymaking milking herd sooner.

During the day, the bed pack absorbs sunlight. This stored heat keeps your calves warm at night. Unlike open huts, temperature change is controlled over a longer time to reduce stress on your calves. It's perfect even in variable climates. Poly Dome stops snow and wind penetration—helps prevent frozen ears and tails.

Use your Poly Dome throughout the year with an eight-inch bedding. By keeping your calves inside, they stay dryer and cleaner. No snow to shovel out, no mud tracked in. No more re-bedding after snow and rain.



AGROCHEM HOOF CARE

The HealMax™ line of products is easy to use and provides an economic means of control. With three unique product applications, HealMax is designed to tackle any situation. Whether using HealMax Spray for a quick and easy spot application, HealMax Foam for whole herd coverage, or HealMax Footbath concentrate in a footbath, you can say goodbye to hairy heel warts.

HoofMax™ is the original additive for footbaths based on copper or zinc sulfate. It is guaranteed to reduce copper sulfate usage, in many cases drastically, and will reduce the cost of your footbath program. HoofMax enables copper to continue working even after the bath is heavily loaded with manure and urine. This allows you to use less copper and change the bath less frequently. HoofMax optimizes footbath chemistry to significantly increase the potency of copper or zinc sulfate.

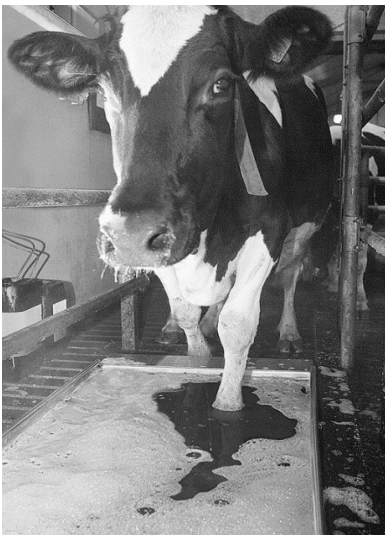


DESCRIPTION
Heal Max Sprayable 1 gal
Heal Max II 15 gal
Heal Max II 55 gal
Hoof Max 15 gal
Hoof Max 55 gal

AGROCHEM FOOTBATH PRODUCTS

- Copper CU
- Formeldyhyde
- Hydrite
- Healmax®
- Hoofmax®
- Ultra 2n1

We also carry:
Copper Sulfate, Zinc Sulfate, Multi mineral and Zinc Chloride



HEALMAX® Products

- The advanced topical antiseptic for safer more effective control of hoof problems.
- Safer than formaldehyde for humans and animals.
- Gets cows back on track fast with visible results beginning in approximately one week.
- Remains effective in both hot and cold weather.

HEALMAX® is ideal for:

- Dairy producers who have experienced corrosion problems from copper sulfate or formaldehyde.
- Dairy producers in areas where use of formaldehyde use is banned or limited.

VIRKON DISINFECTANT

Virkon is known worldwide as one of the most effective biosecurity disinfectants for controlling and eliminating more than 38 viruses including the foot-and-mouth disease virus, and bovine adenovirus type four. Eradicates more than 20 bacteria such as E. coli and several strains of staphylococci, streptococci, and salmonellae. The yellow powder dissolves easily in water and remains stable for 7 days. Virkon can be used in foot mats, baths, and all surfaces. Mix 1.3 oz. per gal. Makes a 1% solution.

DESCRIPTION
Disinfectant Mix, 10 lbs.





TEAT DIPS:

IODINE

Armor®	1% Iodine Barrier with 10% emollients (Organic Approved)
Astrotek®	1% Iodine Barrier with five-way 14% emollient system
EconoStar 5000	.5% Iodine with 2% glycerin
Luxsan® V	.5% Iodine Barrier with six-way 10% emollient system
Luxan® X	1% Iodine Barrier with six-way 14% emollient system
StarMax 110	1% Iodine Barrier with 10% glycerin
Teat Kote® 10/III (post dip)	1% Iodine with three-way 10% emollient system
Theratec® (pre and post dip)	.5% Iodine with 5% three-way emollient system
ValueStar 110	1% Iodine Barrier with 10% glycerin

NON-IODINE

Bi-Sept® (pre & post dip)	Chlorine dioxide germicide with 12% emollient
Dairy Star Peroxide	1% Hydrogen Peroxide with 1% glycerin
DioxiStar	Chlorine dioxide germicide with 10% emollient
Oxycide™	1% Hydrogen Peroxide with 5% emollients and Citric Acid
Velocity™	Chlorine dioxide germicide with 10% emollient

WINTER TEAT DIPS:

Derma-Kote® (post dip)	.5% Iodine 80% Glycol 74% emollient system
Derma Sept®	Non Iodine 80% Glycol 76% emollient system

LINERS:

Global GQ
GQ Rubber
O86
SQ

GENERAL CLEANING:

Foam Blast AF™ – Foaming alkaline cleaner for wall surfaces
 Foam Glo SF™ – Foaming acid cleaner for stainless products



CLEANING :

DETERGENTS

- CircoCold™ - Cold water detergent
- Dairy Star CIP
- Liquid Pfite™

ACID

- Effect®
- Nitro Acid

SANITIZER

- Dairy Star Sanitizer
- Zinicin®

ACID SANITIZER (LPC INHIBITORS)

- Acidoxy-San™ – Peracetic Acid
- PeroxySan-RS™ – Peracetic Acid

NEW Global GQ Liner & Shell

Limitless

milking performance

FAST MILKOUTS ▶▶

HIGH FLOW RATES ▲

QUICK PARLOR THROUGHPUT ↻

ASK YOUR LOCAL
GEA DEALER
ABOUT **TRADE-OUT**
PROGRAMS TODAY!

NEW

New anti-twist shell
locks liner in place

Fits a range of teat
sizes and shapes

Works with any
brand of milking
equipment

GEA DRIVES MY DAIRY INTO THE FUTURE

"Our milking staff likes this lightweight liner/shell combination and the ergonomic grip for a fast, efficient attachment. The Global GQ liners from GEA have a unique locking technology — we're not seeing liners twist in the shell. Best of all, we have seen teat health improve over time with fewer blue teats and liner slips."

JOAN ROBERTS, Valley Mead Farm, 900 Cows

Your Local GEA Milking Equipment Dealer

GEA engineering for
a better world

gea.com

FLY CONTROL SYSTEMS

KATTEGUARD™ AUTOMATIC FLY CONTROL SYSTEMS

KattleGuard™

DESCRIPTION
Single-Arm Applicator
Double-Arm Applicator
Quad-Arm Applicator
KattleGuard Insect Spray (15 gal)
KattleGuard Insect Spray (55 gal)

*With automatic temperature/pressure adjustment.

** Electric options also available

- Requires air compressor to operate system

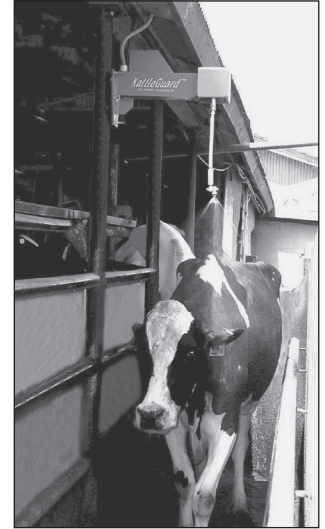


The KattleGuard Automatic Fly Control System is the most effective method of controlling all types of flies and lice in dairy herds today. Typical users claim milk gains of 1.5 to 3 pounds of milk per day when the system is used to control nuisance-type flies. Gains claimed are considerably higher when used for biting flies. This system pays back quickly!

POUR-ON PERFORMANCE WITH AUTOMATIC SPRAYING CONVENIENCE!

KattleGuard insecticide's unique, patent-pending technology provides two key benefits:

- The Rain Guard Technology ensures KattleGuard won't wash off in a downpour or in sprinkler pens. Unlike regular pour-ons, which can lose most of their punch within 5 to 7 days (but are restricted to 14-day application intervals), regular, small applications of KattleGuard insecticide keep a constant killing-level dose on the cows. The broad spray pattern of the system provides a large contact area for the flies.
- KattleGuard's unique formula keeps the product up and available on the hair, providing the extended protection of continuous fly knockdown.



SUPPLIES

FIL TAIL PAINT

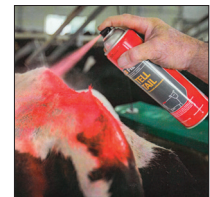
GEA Farm Technologies offers a range of FIL animal markers to specifically meet the needs of today's dairy producers. With a variety of application methods, animal markers are used for accurate identification, heat detection (breeding management), cow sorting, or general marking.

Accurate heat detection—FIL Tell Tail and Detail animal markers are a cost effective and reliable means of heat detection, ensuring dairies improve their pregnancy rates and decrease their days open.

Easy cow sorting—Foam Mark is a temporary marker to visually show those cows which need to be sorted or held back for a variety of reasons such as veterinary treatment, culling, or breeding.

Highly visible treated-cow identification—Udder Mark is specially formulated to last on the cow's udder for eight days, ensuring accurate identification of cows that have been treated with antibiotics and preventing treated milk from entering your milk tank.

General marking solutions—Tell Tail aerosols have universal application capabilities. The bright, fluorescent colors are easily seen, especially in poor light conditions.



TOWELS

SANI-SURE CLOTH DAIRY TOWELS

SANI*[®]SUR
Cloth Dairy Towels

Features:

- Meltec Sani-Sure cloth towels clean and dry more thoroughly
- Meltec Sani-Sure cloth towels cut your yearly towel expense by over 50%
- 85% cotton, 15% polyester

Benefits:

- Soft cloth towels really clean and dry the udder and promote better milk let down
- Unlike paper towels, there is little or no continuous daily expense because Meltec Sani-Sure towels are washable and reusable
- Because the Meltec towel is reusable, you create almost zero impact on the environment and no paper to dispose as waste

MICROFIBER TOWELS

Excellent absorption power—holds several times its weight in dirt and water.

- Cost effective
- Long lasting—up to 6 times longer life
- 70% polyester, 30% nylon

DESCRIPTION
Pack of 50, 12" x 12", blue
Case of 250, 12" x 12", blue

1 Case = 25 boxes

*Multiple case qty. discounts available.

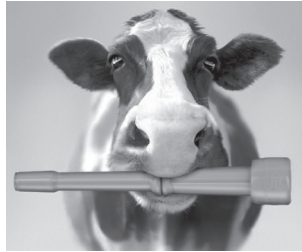


HYDRITE CHEMICAL CO.

Hydrogen Peroxide

CLASSICPRO GQ SILICONE LINER

- Patented shock absorbers in liner head deliver maximum durability.
- Optimal adhesion to teats ensure trouble-free milking.
- Cows will enjoy a fast, teat-friendly, and complete milk process.
- Top quality: flexible silicone material ensures a long service life and the best possible hygiene.
- Unique design features are customized just for the Classic 300 and 300E milking units.



DESCRIPTION
Vented
Non-vented

SILICONE AIR TUBES

SILICONE VACUUM TUBING

SILICONE MILK HOSE

Silicone Hose, Brown Stripe
Silicone Hose, Green

MILKING GLOVES

HANDARMOR NITRILE GLOVES NITRILE NEON GLOVES ECONOMY GLOVES

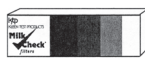
- Each available in small, medium, large, and x-large.

MILK FILTERS

KenAG

Midwest Livestock stocks the leading brands and styles of milk filters:

- Tuffy Filter Socks
- KenAG Break Proof Socks & Tubes
- Team Milk Filters
- Ken AG Ultra Flow Tubes & Socks
- Ken AG Disk & Specialty Filters
- Milk Check Filters & Supplies



DAIRY FLY SPRAY

DY-FLY-1 RTU

Dual-purpose, ready-to-use livestock spray designed to protect dairy cattle, beef cattle, and horses from biting flies. Contains .06% natural pyrethrins and related synergist.

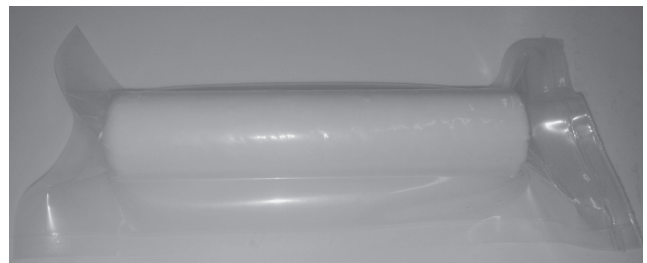
PROZAP VIP RTU

Ready-to-use fly spray. Approved for use on dairy and beef cattle. Approved as a space spray and for outdoor areas.



DESCRIPTION
Dairy Aerosol LD 44Z 25 oz
Dy-Fly-1 RTU Fly Spray (2.5 gal)
Prozap VIP RTU Spray (4 gal)
Prozap VIP RTU Spray (2.5 gal)

FIRST CHOICE CALCIUM BOLUS



First choice Calcium Bolus is an oral calcium supplement that is uniquely formulated to maintain optimal calcium levels and maximize milk production in fresh cows.

Experience the benefits of First Choice

Blood calcium levels are lowest at calving, First Choice Calcium Boluses provide immediate and sustained release calcium at this critical time. First Choice Calcium Boluses also provide vitamin D3 to aid in the absorption of calcium and niacin to reduce ketosis risk.

First Choice Calcium Bolus includes two proven calcium sources. Calcium chloride provides a rapid release of calcium that is quickly absorbed into the bloodstream and calcium sulfate provides sustained release calcium to support calcium levels throughout the calving period. First Choice Calcium Boluses are coated to ensure easy administration and to reduce irritation.

Guaranteed Analysis (per bolus)	
Calcium	50 grams
Niacin	12 grams
Vitamin D3	50,000 IU

DESCRIPTION	
Case of 48	Calcium Bolus
5+ Cases	Calcium Bolus

CaCl ₂ 109 grams
CaSO ₄ 31 grams
H ₂ O 26 grams
Niacin 12 grams
Vitamin D ₃ 50,000 IU
Coating 3 grams

UDDER RELIEF GOLD



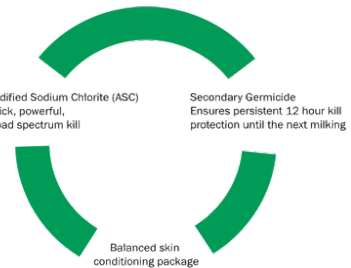
- Dual Action of Peppermint and Winter Green Oils
- Lanolin and Vitamin E to moisturize the skin and Aloe Vera to maintain skin condition
- Distinct Blue Color Indicator
- Cost effective

ABS PRODUCTS

The Valiant products are all a Chlorine Dioxide Base Germicide

- Valiant® Barrier
- Valiant® Express
- Valiant® Pre
- Valiant® Pre & Post
- Valiant® Prime
- Valiant® Shield
- Expor Activator & Base – Chlorine Dioxide for cleaning calf hutches and pens

Valiant® Triple Protection



ECOLAB® PRODUCTS



DETERGENTS:

- CirKlenz II
- Cold-War™ Powder
- Cyclone™ CIP
- HD-325™
- HD-325™ (Powder)
- Principal™

ACIDS:

- HD PL-10™
- LC-30 (manual cleaner)
- Perform™

SANITIZERS/ACID SANITIZERS:

- Bac Drop
- Equipment Sanitizer
- Mandate™/Mandate™ Plus
- Oxybrite (Laundry)

TEAT DIPS: IODINE:

- Eco Plus S.A.
- Ideal 1% Barrier
- Legend HC
- MLS-50
- MLS-100
- MLS-500
- MLS-1000
- Monodine
- Optima Concentrate

TEAT DIPS: NON-IODINE:

- Artec - Winter Dip 50% Heptanoic Acid
- Cynergy™ Barrier - Heptanoic Acid Germicide Barrier
- Cynergy™ Pre & Post - Heptanoic Acid Germicide
- Eco Flex
- Oxyguard - Hydrogen Peroxide 1%
- Wash and Prep



Midwest Livestock stocks a wide variety of consumables and supplies for dairy producers.

PATENTED BURNING PROCESS

- 70-150 lbs. per hour, depending on burn rate
- Low outside shell temperature

COMPLETELY AUTOMATIC

- Auto ignition eliminates lighting pilot
- Operator fills the incinerator, sets the timer and walks away

POLLUTION FREE DISPOSAL

- Meets or exceeds EPA guidelines

HEAVY DUTY CONSTRUCTION

- Constructed of 3/8" reinforced steel for extended life

PATENTED, THERMOSTATICALLY CONTROLLED SYSTEM

- Independent major university studies show the unique design of the cremator saves up to 65% on fuel consumption, resulting in a savings of more than a gallon of fuel per hour.

PATENTED LINER

- Block liner allows you to replace tiles at a fraction of the cost of purchasing a new unit.
- With proper operation, the block liner has a life expectancy of 7,500 to 10,000 hours.
- Diesel, LP, Natural Gas and Methane models available
- 2 sizes available: 52" with a 2,000 lb capacity and 64" with a 3,000 lb capacity



OPTIMAL COW COMFORT DESIGN

Midwest Livestock Systems can help design your facility with optimal cow comfort in mind to reduce animal stress and improve production.

*Cross ventilation freestall barn to keep cows producing to their potential

*Vertical Lift Stalls enhance cow comfort during milking and allow for a fast and easy cow exit



Freestall Barn Ventilation



Vertical Lift Milking Stalls



To serve you better, we're proud dealers for these quality companies:

A.O. Smith - Water heaters

AgriComfort - Rubber flooring, mattresses, calf housing

Agriplastic - Agri-Comfort rubber mats, calf housing

AgroChem - Hoofcare, copper sulfate, formeldhye, zinc sulfate, multimneral, zinc chloride

Agromatic - Rubber flooring, freestalls and headlocks

Allflex SCR - Monitoring systems

AutoVent - Ventilation systems, automated footbath system

Beco Dairy Automation, Inc - Milking equipment

Calf Star - Milk pasteurizers, milk taxis, other calf equipment

Calf-Tel - Calf housing

CastAir - Air compressors/equipment

Con-Korite - Concrete repair

Daritech - Manure Handling

DCC Waterbeds - Waterbeds

E-Zee - Stainless recievers/milkline, parts

EasyFix - Cow mats and mattresses, parlor and feeding area mats

Ecolab - Dairy sanitation supplies

Edstorm - Cow cooling

Eiko - LED lighting

Freudenthal Manufacturing - Freestalls, headlocks, gates and panels

FS Curtis - Compressors

Future Cow - Cow brushes and teat scrubbers

GEA Farm Technologies - Dairy hygiene and sanitation, equipment

J&D - Full line of dairy barn equipment

Ritchie - Waterers

Kattleguard - Fly control systems

Kraiburg - Rubber products

Lauren - Liners

Mirafount - Waterers

Mueller - Milk storage and cooling

Munters - Ventilation systems and fans

Norbco - Curtains, fans, stalls and headlocks

Polydome - Calf housing

Thorp Equipment - Stainless steel doors and equipment

Under Udder - LED parlor lighting

Valmetal /Jamesway/US Farm Systems - Manure handling

VES - Ventilation and cooling systems

Westwaard - Pastuerizers and bottle washers



501 22nd Street
Zumbrota, MN 55992

ORDER ONLINE
www.midwestlivestock.com

HOURS

Monday-Friday, 7:30 am - 4:30 p.m.

CUSTOMER GUARANTEE

Your complete satisfaction, nothing less.

SAME-DAY SHIPPING

On in-stock orders received on weekdays by 2 pm C.S.T.

TO ORDER

Call a MLS Warehouse during regular business hours.

Menomonie: 715.235.5144

Renner: 605.274.3656

Zumbrota: 507.732.4673

Email dairysales@midwestlivestock.com

or visit us online at www.midwestlivestock.com

Serving dairy producers in Wisconsin, Minnesota, Iowa, North Dakota, South Dakota and Nebraska.

Pay with a credit card or charge to an approved MLS account.

